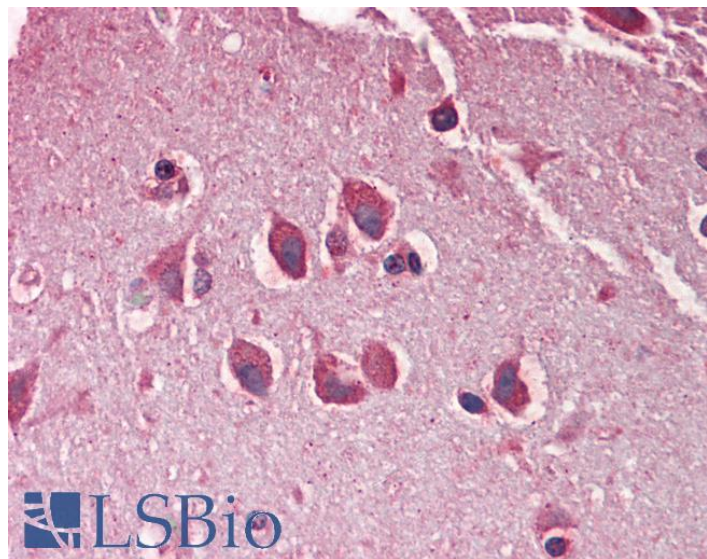


GOAT ANTI-MXRA5 ANTIBODY

SKU: EB09687



SPECIFICATIONS

Formulation Supplied at 0.5 mg/ml in Tris saline, 0.02% sodium azide, pH7.3 with 0.5% bovine serum albumin.

Unit Size 100 µg

Storage Instructions Aliquot and store at -20°C. Minimize freezing and thawing.

Synonym / Alias Names adlcan|adhesion protein with leucine-rich repeats and Immunoglobulin domains related to perlecan|OTTHUMP00000022860|DKFZp564I1922|matrix-remodelling associated 5|MXRA5

Accession ID NP_056234.2

Blocking Peptide EBP09687

Immunogen Peptide with sequence C-QAETTTLDQDHLET, from the internal region of the protein sequence according to NP_056234.2.

Peptide Sequence C-QAETTTLDQDHLET

Purification Method Purified from goat serum by ammonium sulphate precipitation followed by antigen affinity chromatography using the immunizing peptide.

Shipping Instructions Refrigerated

Predicted Species	Human
Reactive Species	Human
Human Gene ID	25878
Product Grade	https://prod-vector-labs-pimcore-assets.s3.us-east-1.amazonaws.com/assets/products/image/elite_medium.png
IHC Results	Paraffin embedded Human Brain (Cortex). Recommended concentration: 5µg/ml.
ELISA	
Detection Limit	Antibody detection limit dilution 1:16000.
Western Blot	Preliminary experiments in Human Brain (Hippocampus) and Skeletal Muscle lysates gave no specific signal but low background (at antibody concentration up to 1µg/ml).
Application Type	Pep-ELISA, IHC

DOCUMENTS

- [Data Sheet](#)

GALLERY IMAGES

