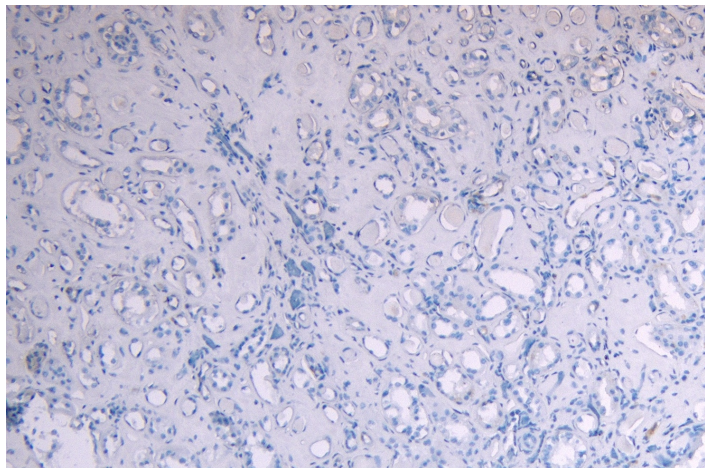


GOAT ANTI-C-MYB (AA281-294) ANTIBODY

SKU: EB07870



SPECIFICATIONS

Formulation Supplied at 0.5 mg/ml in Tris saline, 0.02% sodium azide, pH7.3 with 0.5% bovine serum albumin.

Unit Size 100 µg

Storage Instructions Aliquot and store at -20°C. Minimize freezing and thawing.

Synonym / Alias Names v-myb myeloblastosis viral oncogene homolog|v-myb avian myeloblastosis viral oncogene homolog|c-myb8B_CDS|c-myb14A_CDS|c-myb13A_CDS|c-myb10A_CDS|c-myb protein (140 AA)|Avian myeloblastosis viral (v-myb) oncogene homolog|efg|c-myb_CDS|v-myb myeloblastosis viral oncogene homolog (avian)|MYB|c-myb
Accession ID NP_001123645.1; NP_005366.2; NP_001123644.1; NP_001155128.1; NP_001155129.1; NP_001155130.1; NP_001155131.1

Blocking Peptide EBP07870

Immunogen Peptide with sequence C-QRHYNDEDPEKEKR, from the internal region of the protein sequence according to NP_001123645.1; NP_005366.2; NP_001123644.1; NP_001155128.1; NP_001155129.1; NP_001155130.1; NP_001155131.1.

Product Comments This antibody is expected to recognize isoforms 1-7 only (Numbering from NCBI RefSeq). (NP_001123645.1; NP_005366.2; NP_001123644.1; NP_001155128.1; NP_001155129.1; NP_001155130.1; NP_001155131.1)

Peptide Sequence C-QRHYNDEDPEKEKR

Purification Method Purified from goat serum by ammonium sulphate precipitation followed by antigen affinity chromatography using the immunizing peptide.

Shipping Instructions Refrigerated

Predicted Species	Human, Mouse, Rat, Dog
Reactive Species	Human
Human Gene ID	4602
Mouse Gene ID	17863
Product Grade	https://prod-vector-labs-pimcore-assets.s3.us-east-1.amazonaws.com/assets/products/image/elite_medium.png
IHC Results	Paraffin embedded Human Kidney. Recommended concentration: 4µg/ml.
ELISA Detection Limit	Antibody detection limit dilution 1:4000.
Western Blot	Approx 70kDa band observed in lysates of cell line MOLT4 and in preliminary testing of Human Bone Marrow and Lymph Node lysate (calculated MW of 72.3kDa according to NP_005366.2). Recommended concentration: 1-3µg/ml.
Application Type	Pep-ELISA, WB, IHC

DOCUMENTS

- [Data Sheet](#)

GALLERY IMAGES

