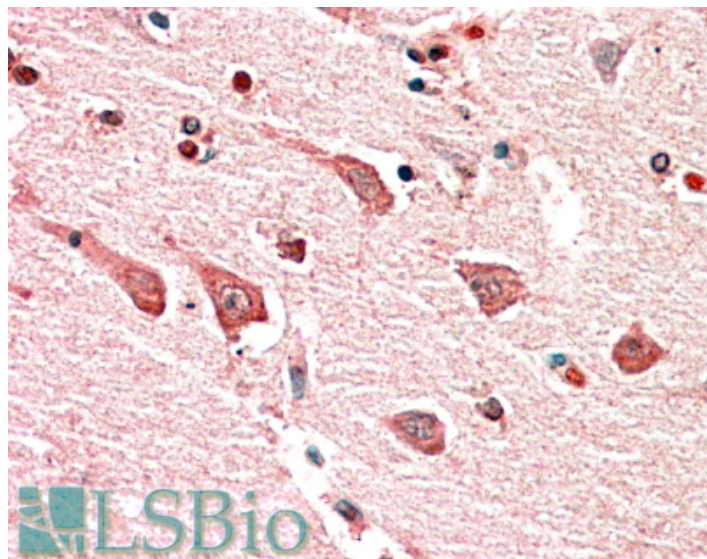


GOAT ANTI-MYO1B ANTIBODY

SKU: EB10549



SPECIFICATIONS

Formulation Supplied at 0.5 mg/ml in Tris saline, 0.02% sodium azide, pH7.3 with 0.5% bovine serum albumin.

Unit Size 100 µg

Storage Instructions Aliquot and store at -20°C. Minimize freezing and thawing.

Synonym / Alias Names myosin-Ib| myosin I alpha| OTTHUMP00000165861| MYO1B variant protein| MYH-1c| MMIa| MMI-alpha| myr1| myosin IB|MYO1B

Accession ID NP_001123630.1; NP_036355.2

Blocking Peptide EBP10549

Immunogen Peptide with sequence C-RTVEAKQEKVSTT, from the internal region of the protein sequence according to NP_001123630.1; NP_036355.2.

Product Comments This antibody is expected to recognize both reported isoforms (NP_001123630.1; NP_036355.2). Reported variants represent identical protein: NP_001123630.1, NP_001155291.1.

Peptide Sequence C-RTVEAKQEKVSTT

Purification Method Purified from goat serum by ammonium sulphate precipitation followed by antigen affinity chromatography using the immunizing peptide.

Shipping Instructions	Refrigerated
Predicted Species	Human, Mouse, Rat, Dog, Cow
Reactive Species	Human, Mouse
Human Gene ID	4430
Mouse Gene ID	17912
Rat Gene ID	117057
Product Grade	https://prod-vector-labs-pimcore-assets.s3.us-east-1.amazonaws.com/assets/products/image/elite_medium.png
IHC Results	In paraffin embedded Human Cerebral Cortex shows cytoplasm staining in the neuronal bodies. Recommended concentration, 5-10µg/ml.
ELISA	
Detection Limit	Antibody detection limit dilution 1:16000.
Western Blot	Approx 120kDa band observed in lysates of cell line NIH3T3 (calculated MW of 125kDa according to Human NP_036355.2 and 128kDa according to Mouse NP_034993.2). Recommended concentration: 1-3µg/ml.
Application Type	Pep-ELISA, WB, IHC

DOCUMENTS

- [Data Sheet](#)

GALLERY IMAGES

