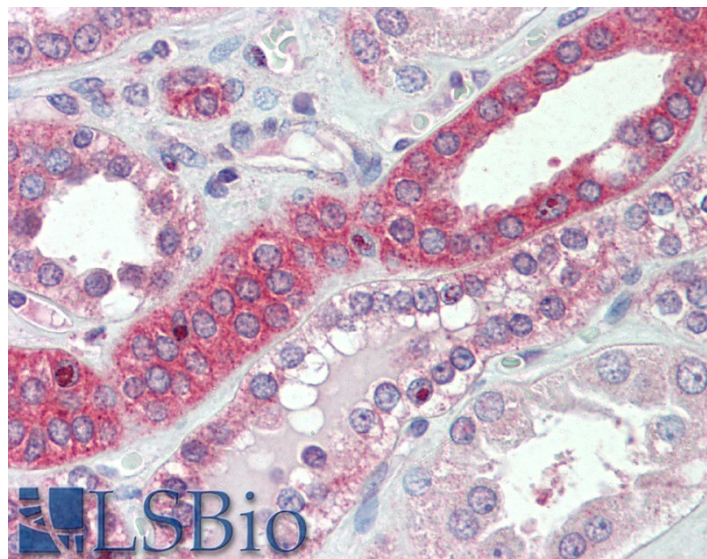


GOAT ANTI-MYOSIN IH ANTIBODY

SKU: EB12108



SPECIFICATIONS

Formulation Supplied at 0.5 mg/ml in Tris saline, 0.02% sodium azide, pH7.3 with 0.5% bovine serum albumin.

Unit Size 100 µg

Storage Instructions Aliquot and store at -20°C. Minimize freezing and thawing.

Synonym /

Alias MYO1H|myosin IH|myosin-1H|myosin-Ih|unconventional myosin-Ih

Names

Accession ID NP_001158045.1

Blocking Peptide EBP12108

Immunogen Peptide with sequence C-EDQVYKDKNGQLR, from the C Terminus of the protein sequence according to NP_001158045.1.

Peptide Sequence C-EDQVYKDKNGQLR

Purification Method Purified from goat serum by ammonium sulphate precipitation followed by antigen affinity chromatography using the immunizing peptide.

Shipping Instructions Refrigerated

Predicted Species	Human, Mouse, Rat, Cow, Pig
Reactive Species	Human, Mouse
Human Gene ID	283446
Mouse Gene ID	231646
Rat Gene ID	687866
Product Grade	https://prod-vector-labs-pimcore-assets.s3.us-east-1.amazonaws.com/assets/products/image/elite_medium.png
IHC Results	Paraffin embedded Human Kidney. Recommended concentration: 5µg/ml.
ELISA	
Detection Limit	Antibody detection limit dilution 1:128000.
Western Blot	Approx 110kDa band observed in lysates of cell line NIH3T3 (calculated MW of 118kDa according to NP_001158045.1). Recommended concentration: 0.1-0.3µg/ml. An additional band of unknown identity was also consistently observed at 28kDa. This band was successfully blocked by incubation with the immunizing peptide. Primary incubation was 1 hour. Preliminary testing was unsuccessful on Rat and Pig Skeletal Muscle for this particular batch.
Application Type	Pep-ELISA, WB, IHC

DOCUMENTS

- [Data Sheet](#)

GALLERY IMAGES

