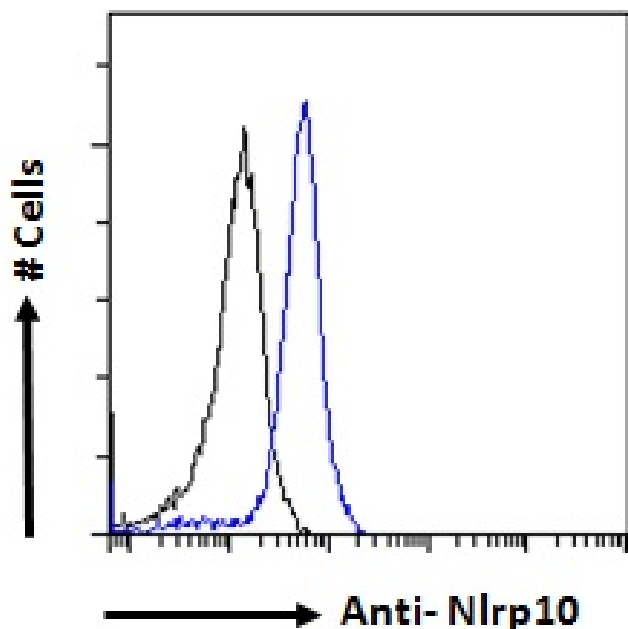


GOAT ANTI-NALP10 / NLRP10 (MOUSE) ANTIBODY

SKU: EB11473



SPECIFICATIONS

Formulation Supplied at 0.5 mg/ml in Tris saline, 0.02% sodium azide, pH7.3 with 0.5% bovine serum albumin.

Unit Size 100 µg

Storage Instructions Aliquot and store at -20°C. Minimize freezing and thawing.

Synonym / Alias Names 6430548I20Rik|NACHT, leucine rich repeat and PYD containing 10|NACHT, LRR and PYD containing protein 10|NACHT, LRR and PYD domains-containing protein 10|NACHT/LRR/pyrin domain-containing protein 10|Nalp10|Nap10|neuronal apoptosis inhibitor protein 10|NLR family, pyrin domain containing 10|Nlrp10|PAN5|Pynod

Usage Summary **Immunofluorescence:** Strong expression of the protein seen in the cytoplasm of NIH3T3 cells. Recommended concentration: 10µg/ml. **Flow Cytometry:** Flow cytometric analysis of NIH3T3 cells. Recommended concentration: 10ug/ml.

Accession ID NP_780741.1

Blocking Peptide EBP11473

Immunogen Peptide with sequence NDLEENSFKTLKFH-C, from the N Terminus of the protein sequence according to NP_780741.1.

Peptide Sequence	NDLEENSFKTLKFH-C
Purification Method	Purified from goat serum by ammonium sulphate precipitation followed by antigen affinity chromatography using the immunizing peptide.
Shipping Instructions	Refrigerated
Predicted Species	Mouse, Rat
Reactive Species	Mouse
Mouse Gene ID	244202
Rat Gene ID	293426
Product Grade	https://prod-vector-labs-pimcore-assets.s3.us-east-1.amazonaws.com/assets/products/image/elite_medium.png
ELISA Detection Limit	Antibody detection limit dilution 1:128000.
Application Type	Pep-ELISA, IF, FC

DOCUMENTS

- [Data Sheet](#)

GALLERY IMAGES

