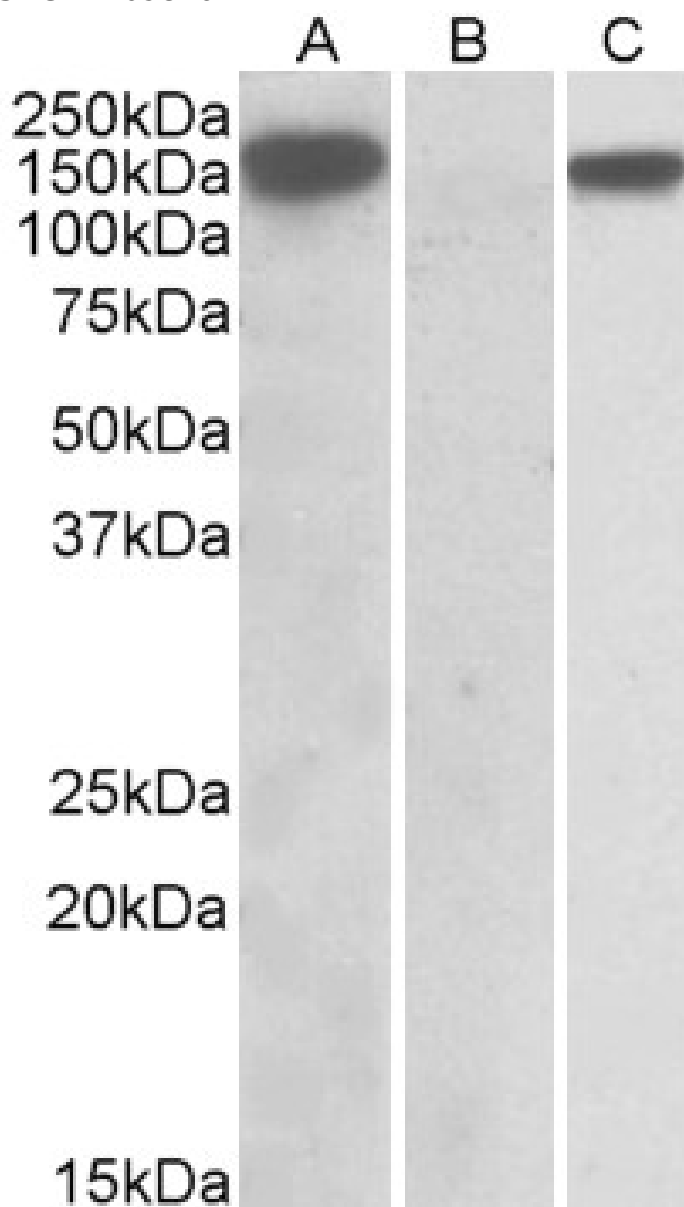


GOAT ANTI-NALP2 / PAN1 ANTIBODY

SKU: EB09876



SPECIFICATIONS

Formulation	Supplied at 0.5 mg/ml in Tris saline, 0.02% sodium azide, pH7.3 with 0.5% bovine serum albumin.
Unit Size	100 µg
Storage	Aliquot and store at -20°C. Minimize freezing and thawing.
Instructions	
Synonym / Alias	CLR19.9 FLJ20510 NACHT, leucine rich repeat and PYD containing 2 NACHT, LRR and PYD containing protein 2 NALP2 NBS1 NLR family, pyrin domain containing 2 nucleotide-binding oligomerization domain, I PAN1 PYPAF2 PYRIN-Containing APAF1-like NLRP2
Names	
Usage	Purchase the +ve control! The transfected lysate used in QC is available for sale. Please email sales@everestbiotech.com to request datasheet, pricing and delivery information.
Summary	
Accession ID	NP_060322.1
Blocking Peptide	EBP09876
Immunogen	Peptide with sequence C-KNPQLIIDTEKHHP, from the C Terminus (near) of the protein sequence according to NP_060322.1.
Peptide Sequence	C-KNPQLIIDTEKHHP
Purification Method	Purified from goat serum by ammonium sulphate precipitation followed by antigen affinity chromatography using the immunizing peptide.
Shipping Instructions	Refrigerated
Predicted Species	Human
Reactive Species	Human
Human Gene ID	55655
Product Grade	https://prod-vector-labs-pimcore-assets.s3.us-east-1.amazonaws.com/assets/products/image/elite_medium.png
ELISA	
Detection Limit	Antibody detection limit dilution 1:16000.
Western Blot	In transfected HEK293 transiently expressing full-length Human NLRP2 (myc and DYKDDDDK tagged), a band of approx. 150kDa was observed. No bands were observed in mock-transfected HEK293 and the same band was observed using anti-DYKDDDDK tag antibody. Recommended concentration, 1-2µg/ml.
Application Type	Pep-ELISA, WB-Trf

DOCUMENTS

- [Data Sheet](#)

GALLERY IMAGES

