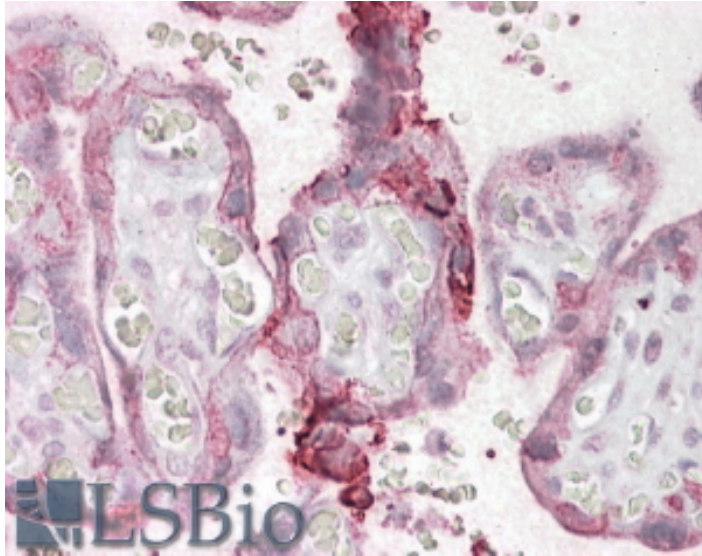




# GOAT ANTI-NCE2 / UBE2F ANTIBODY

SKU: EB08947



## SPECIFICATIONS

<b>Formulation</b>	Supplied at 0.5 mg/ml in Tris saline, 0.02% sodium azide, pH7.3 with 0.5% bovine serum albumin.
<b>Unit Size</b>	100 µg
<b>Storage Instructions</b>	Aliquot and store at -20°C. Minimize freezing and thawing.
<b>Synonym / Alias Names</b>	NEDD8-conjugating enzyme NEDD8 conjugating enzyme NCE2 MGC18120 ubiquitin-conjugating enzyme E2F (putative) UBE2F
<b>Accession ID</b>	NP_542409.1
<b>Blocking Peptide</b>	EBP08947
<b>Immunogen</b>	Peptide with sequence C-HLRDKEDFRNKVDD, from the C Terminus of the protein sequence according to NP_542409.1.
<b>Peptide Sequence</b>	C-HLRDKEDFRNKVDD
<b>Purification Method</b>	Purified from goat serum by ammonium sulphate precipitation followed by antigen affinity chromatography using the immunizing peptide.
<b>Shipping Instructions</b>	Refrigerated



<b>Predicted Species</b>	Human, Mouse, Rat, Dog, Cow
<b>Reactive Species</b>	Human, Mouse
<b>Human Gene ID</b>	140739
<b>Mouse Gene ID</b>	67921
<b>Rat Gene ID</b>	363284
<b>Product Grade</b>	<a href="https://prod-vector-labs-pimcore-assets.s3.us-east-1.amazonaws.com/assets/products/image/elite_medium.png">https://prod-vector-labs-pimcore-assets.s3.us-east-1.amazonaws.com/assets/products/image/elite_medium.png</a>
<b>IHC Results</b>	In paraffin embedded Human Placenta shows membrane staining in trophoblasts-. Recommended concentration: 2.5-3.8µg/ml.
<b>ELISA Detection Limit</b>	Antibody detection limit dilution 1:32000.
<b>Western Blot</b>	Approx. 20kDa band observed in Mouse Liver lysates (calculated MW of 21.1kDa according to Human NP_542409.1 and to Mouse NP_080730.1). Recommended concentration: 0.05-0.2µg/ml.
<b>Application Type</b>	Pep-ELISA, WB, IHC

## DOCUMENTS

- [Data Sheet](#)

## GALLERY IMAGES

