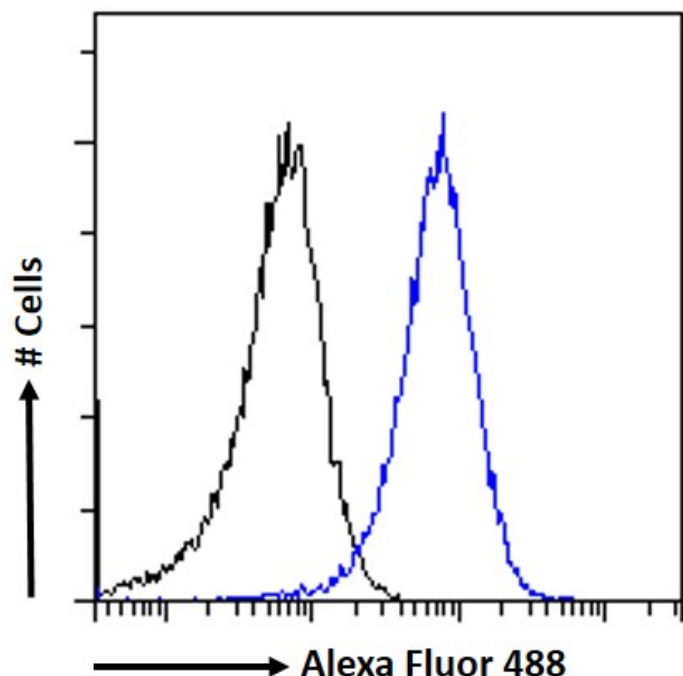


# GOAT ANTI-NCKAP1 ANTIBODY

SKU: EB11695



## SPECIFICATIONS

**Formulation** Supplied at 0.5 mg/ml in Tris saline, 0.02% sodium azide, pH7.3 with 0.5% bovine serum albumin.

**Unit Size** 100 µg

**Storage Instructions** Aliquot and store at -20°C. Minimize freezing and thawing.

**Synonym / Alias Names** p125Nap1|OTTHUMP00000163461|OTTHUMP00000163460|NCK-associated protein 1|NCKAP1|NAP125|NAP1|NAP 1|MGC8981|membrane-associated protein HEM-2|KIAA0587|HEM2|FLJ11291

**Usage Summary** **Immunofluorescence:** Strong expression of the protein seen in the cytoplasm of U2OS and A431 cells. Recommended concentration: 10µg/ml. **Flow Cytometry:** Flow cytometric analysis of A431 cells. Recommended concentration: 10ug/ml.

**Accession ID** NP\_038464.1; NP\_995314.1

**Blocking Peptide** EBP11695

<b>Immunogen</b>	Peptide with sequence C-TPREYLTSHLEIR, from the internal region of the protein sequence according to NP_038464.1; NP_995314.1.
<b>Product Comments</b>	This antibody is expected to recognize both reported isoforms (NP_038464.1; NP_995314.1).
<b>Peptide Sequence</b>	C-TPREYLTSHLEIR
<b>Purification Method</b>	Purified from goat serum by ammonium sulphate precipitation followed by antigen affinity chromatography using the immunizing peptide.
<b>Shipping Instructions</b>	Refrigerated
<b>Predicted Species</b>	Human, Mouse, Rat, Dog, Pig, Cow
<b>Reactive Species</b>	Human
<b>Human Gene ID</b>	10787
<b>Mouse Gene ID</b>	50884
<b>Rat Gene ID</b>	58823
<b>Product Grade</b>	<a href="https://prod-vector-labs-pimcore-assets.s3.us-east-1.amazonaws.com/assets/products/image/elite_medium.png">https://prod-vector-labs-pimcore-assets.s3.us-east-1.amazonaws.com/assets/products/image/elite_medium.png</a>
<b>ELISA Detection Limit</b>	Antibody detection limit dilution 1:128000.
<b>Western Blot</b>	Preliminary experiments gave an approx 100kDa band in Human Cerebellum, Cerebral Cortex, Skin and Tonsil lysates after 0.5µg/ml antibody staining, and was successfully blocked by incubation with the immunizing peptide. Please note the calculated MWt.is 129kDa according to NP_038464.1 and approx. 110-125kDa bands have been observed by other sources.
<b>Application Type</b>	Pep-ELISA, IF, FC

## DOCUMENTS

- [Data Sheet](#)

## GALLERY IMAGES

