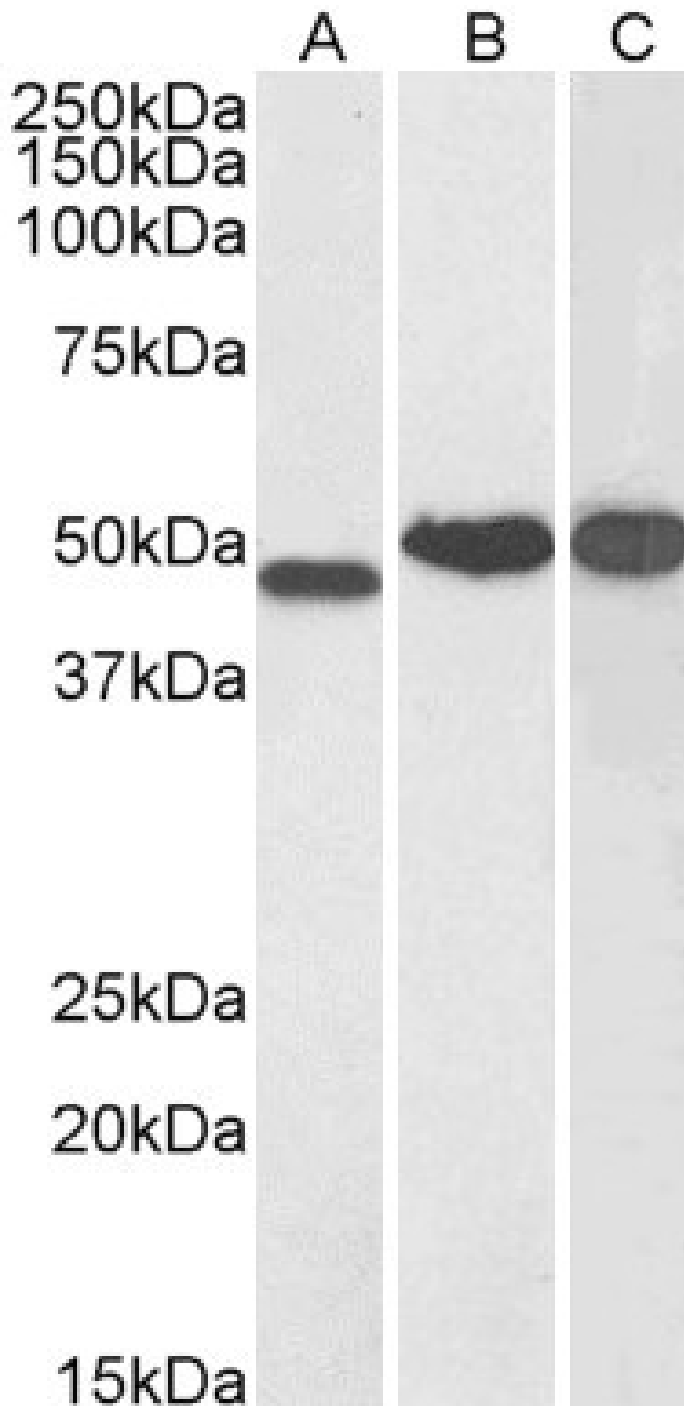




## GOAT ANTI-NDRG1 ANTIBODY

**SKU:** EB05707





## SPECIFICATIONS

<b>Formulation</b>	Supplied at 0.5 mg/ml in Tris saline, 0.02% sodium azide, pH7.3 with 0.5% bovine serum albumin.
<b>Unit Size</b>	100 µg
<b>Storage Instructions</b>	Aliquot and store at -20°C. Minimize freezing and thawing.
<b>Synonym / Alias Names</b>	DRG-1 tunicamycin-responsive protein reducing agents and tunicamycin-responsive protein protein regulated by oxygen-1 nickel-specific induction protein Cap43 differentiation-related gene 1 protein N-myc downstream regulated gene 1 protein TDD5 TARG1 RTP RIT42 PROXY1 NMSL NDR1 HMSNL GC4 DRG1 CMT4D CAP43,  N-myc downstream regulated gene 1 NDRG1
<b>Accession ID</b>	NP_006087.2
<b>Blocking Peptide</b>	EBP05707
<b>Immunogen</b>	Peptide with sequence GNSAGPKSMEVSC, from the C Terminus of the protein sequence according to NP_006087.2.
<b>Product Comments</b>	The variants (NP_006087.2; NP_001128714.1) encode the same protein
<b>Peptide Sequence</b>	GNSAGPKSMEVSC
<b>Purification Method</b>	Purified from goat serum by ammonium sulphate precipitation followed by antigen affinity chromatography using the immunizing peptide.
<b>Shipping Instructions</b>	Refrigerated
<b>Predicted Species</b>	Human
<b>Reactive Species</b>	Human
<b>Human Gene ID</b>	10397
<b>Mouse Gene ID</b>	17990
<b>Product Grade</b>	<a href="https://prod-vector-labs-pimcore-assets.s3.us-east-1.amazonaws.com/assets/products/image/elite_medium.png">https://prod-vector-labs-pimcore-assets.s3.us-east-1.amazonaws.com/assets/products/image/elite_medium.png</a>
<b>IHC Results</b>	In paraffin embedded Human hepatocellular carcinoma shows strong labeling of membranes and weaker staining of cytoplasm. These observations are consistent with those obtained by different antibodies. Recommended concentration: 0.5-2µg/ml. Paraffin embedded Human Prostate and Colon. Recommended concentration: 2.5µg/ml.
<b>ELISA Detection Limit</b>	Antibody detection limit dilution 1:32000.



**Western  
Blot**

Approx 48kDa band observed in Human Kidney, and approx 50kDa band observed in Human Brain (Cerebellum) and Testis lysates (calculated MW of 42.8kDa according to NP\_006087.2). This molecular weight is routinely observed by other sources. Recommended concentration: 0.1-0.3µg/ml. Primary incubation was 1 hour. Preliminary testing was unsuccessful on Mouse and Rat for this particular batch.

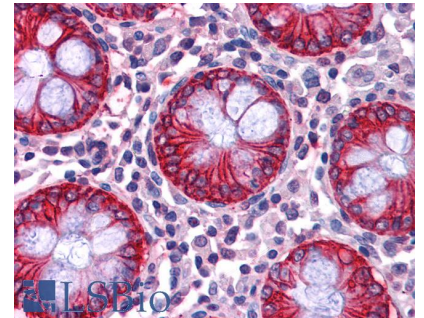
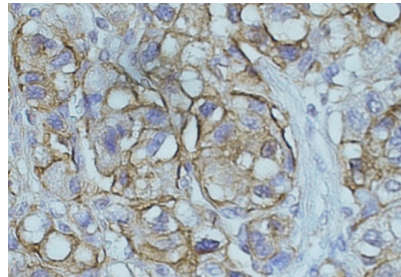
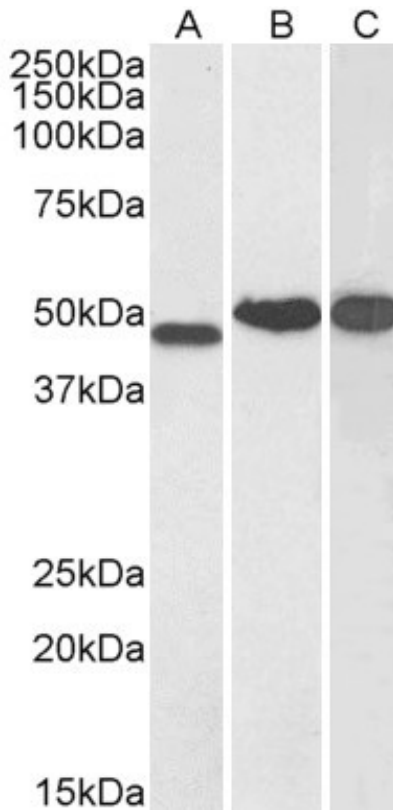
**Application  
Type**

Pep-ELISA, WB, IHC

## DOCUMENTS

- [Data Sheet](#)

## GALLERY IMAGES





[www.everestbiotech.com](http://www.everestbiotech.com)

Email: [customerservice@vectorlabs.com](mailto:customerservice@vectorlabs.com)

Telephone: [\(650\) 697-3600](tel:(650)697-3600)

