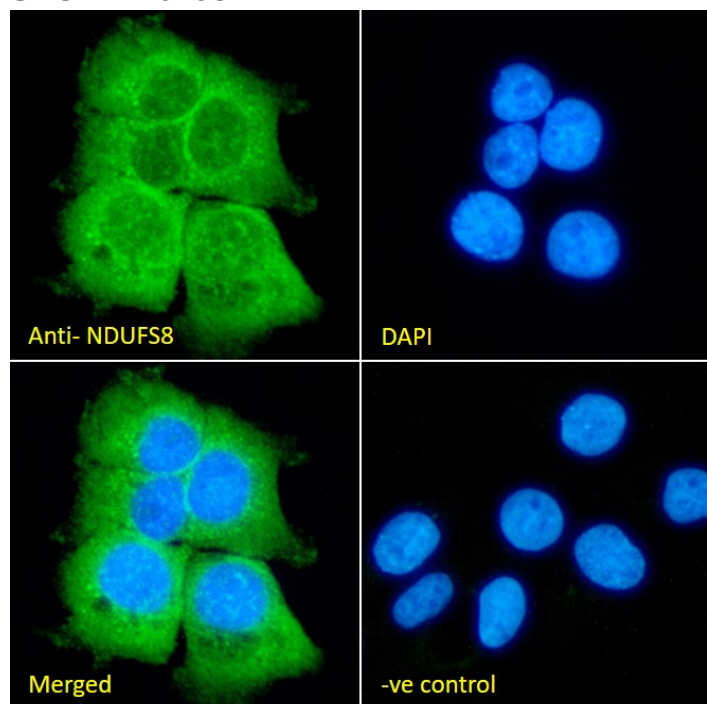


GOAT ANTI-NDUFS8 ANTIBODY

SKU: EB10193



SPECIFICATIONS

Formulation	Supplied at 0.5 mg/ml in Tris saline, 0.02% sodium azide, pH7.3 with 0.5% bovine serum albumin.
Unit Size	100 µg
Storage Instructions	Aliquot and store at -20°C. Minimize freezing and thawing.
Synonym / Alias Names	NDUFS8 TYKY NADH-ubiquinone oxidoreductase 23 kDa subunit NADH dehydrogenase ubiquinone Fe-S 8 NADH dehydrogenase (ubiquinone) Fe-S protein 8, 23kDa (NADH-coenzyme Q reductase) complex I-23kD CI23KD
Usage Summary	<p>Immunofluorescence: Strong expression of the protein seen in the cytoplasm of A431 cells.</p> <p>Flow Cytometry: Flow cytometric analysis of A431 cells. Recommended concentration: 10ug/ml.</p>
Accession ID	NP_002487.1
Blocking Peptide	EBP10193
Immunogen	Peptide with sequence C-EAEIAANIQAD, from the internal region of the protein sequence according to NP_002487.1.

Peptide Sequence	C-EAEIAANIQAD
Purification Method	Purified from goat serum by ammonium sulphate precipitation followed by antigen affinity chromatography using the immunizing peptide.
Shipping Instructions	Refrigerated
Predicted Species	Human, Mouse, Rat, Dog, Cow
Reactive Species	Human, Rat
Human Gene ID	4728
Mouse Gene ID	225887
Rat Gene ID	293652
Product Grade	https://prod-vector-labs-pimcore-assets.s3.us-east-1.amazonaws.com/assets/products/image/elite_plus_medium.png
ELISA Detection Limit	Antibody detection limit dilution 1:4000.
Western Blot	Approx. 25kDa band observed in Rat Heart and Brain lysates and in preliminary testing of Rat Kidney, Human Heart lysate and A549 cell lysate (calculated MW of 24kDa according to Rat : NP_001099792.1). Recommended concentration: 0.5-2µg/ml. Primary incubation 1 hour at room temperature.
Application Type	Pep-ELISA, WB, IF, FC

DOCUMENTS

- [Data Sheet](#)

GALLERY IMAGES

