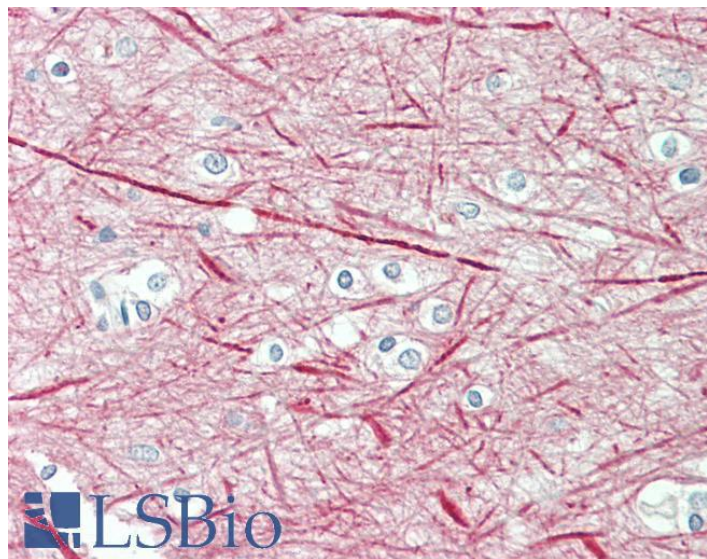


GOAT ANTI-NEFM / NF-M ANTIBODY

SKU: EB09641



SPECIFICATIONS

Formulation Supplied at 0.5 mg/ml in Tris saline, 0.02% sodium azide, pH7.3 with 0.5% bovine serum albumin.

Unit Size 100 µg

Storage Instructions Aliquot and store at -20°C. Minimize freezing and thawing.

Synonym / Alias Names neurofilament-3 (150 kD medium)|neurofilament, medium polypeptide 150kDa|neurofilament triplet M protein|NFM|NF-M|NEF3|neurofilament, medium polypeptide|NEFM

Accession ID NP_005373.2

Blocking Peptide EBP09641

Immunogen Peptide with sequence C-QASHITVERKDYLK, from the internal region of the protein sequence according to NP_005373.2.

Product Comments This antibody is expected to recognize reported isoform 1 (NP_005373.2) only.

Peptide Sequence C-QASHITVERKDYLK

Purification Method Purified from goat serum by ammonium sulphate precipitation followed by antigen affinity chromatography using the immunizing peptide.

Shipping Instructions	Refrigerated
Predicted Species	Human, Mouse, Rat, Dog, Pig, Cow
Reactive Species	Human, Mouse
Human Gene ID	4741
Mouse Gene ID	18040
Rat Gene ID	24588
Product Grade	https://prod-vector-labs-pimcore-assets.s3.us-east-1.amazonaws.com/assets/products/image/elite_medium.png
IHC Results	Paraffin embedded Human Brain (Cortex). Recommended concentration: 5µg/ml.
ELISA	
Detection Limit	Antibody detection limit dilution 1:128000.
Western Blot	Approx 170-200kDa band observed in Mouse Brain lysates (calculated MW of 102kDa according to NP_005373.2). This molecular weight is routinely observed by other sources. Recommended concentration: 0.03-0.1µg/ml. Primary incubation was 1 hour.
Application Type	Pep-ELISA, WB, IHC

DOCUMENTS

- [Data Sheet](#)

GALLERY IMAGES

