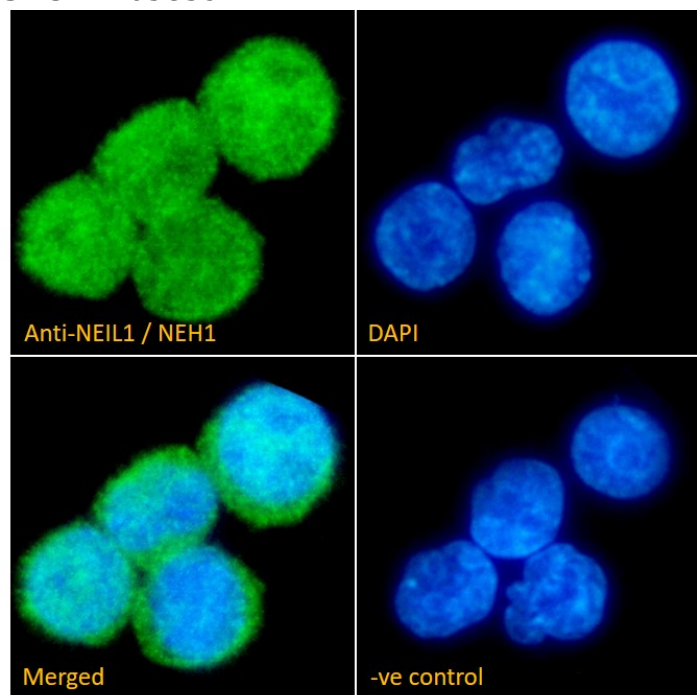


GOAT ANTI-NEIL1 / NEH1 ANTIBODY

SKU: EB05859



SPECIFICATIONS

Formulation Supplied at 0.5 mg/ml in Tris saline, 0.02% sodium azide, pH7.3 with 0.5% bovine serum albumin.

Unit Size 100 µg

Storage Instructions Aliquot and store at -20°C. Minimize freezing and thawing.

Synonym / Alias Names nei endonuclease VIII-like 1|hFPG1|FPG1|endonuclease VIII|FLJ22402|NEI1|nei endonuclease VIII-like 1 (E. coli)|NEH1|NEIL1

Usage Summary **Immunofluorescence:** Strong expression of the protein seen in the nuclei and cytoplasm of U937 cells. Recommended concentration: 10µg/ml. **Flow Cytometry:** Flow cytometric analysis of U937 cells. Recommended concentration: 10ug/ml.

Accession ID NP_078884.2; NP_001243481.1; NP_001339449.1

Blocking Peptide EBP05859

Immunogen Peptide with sequence C-DIPSLEPEGTSAS, from the C Terminus of the protein sequence according to NP_078884.2; NP_001243481.1; NP_001339449.1.

| | |
|------------------------------|--|
| Peptide Sequence | C-DIPSLEPEGTSAS |
| Purification Method | Purified from goat serum by ammonium sulphate precipitation followed by antigen affinity chromatography using the immunizing peptide. |
| Shipping Instructions | Refrigerated |
| Predicted Species | Human |
| Reactive Species | Human |
| Human Gene ID | 79661 |
| Product Grade | https://prod-vector-labs-pimcore-assets.s3.us-east-1.amazonaws.com/assets/products/image/elite_plus_medium.png |
| IHC Results | In paraffin embedded Human Placenta shows strong staining of cytoplasm in syncytiotrophoblasts. Recommended concentration: 5-10µg/ml. |
| ELISA Detection Limit | Antibody detection limit dilution 1:16000. |
| Western Blot | Approx. 60kDa band observed in lysates of cell lines Daudi and U937, and in nuclear cell lysates of HEK293 (calculated MW of 53.0kDa according to NP_001243481.1). This band was successfully blocked by incubation with the immunizing peptide. Recommended concentration: 2-3µg/ml. Primary incubation 1 hour at room temperature. |
| Application Type | Pep-ELISA, WB, IHC, IF, FC |

DOCUMENTS

- [Data Sheet](#)

GALLERY IMAGES

