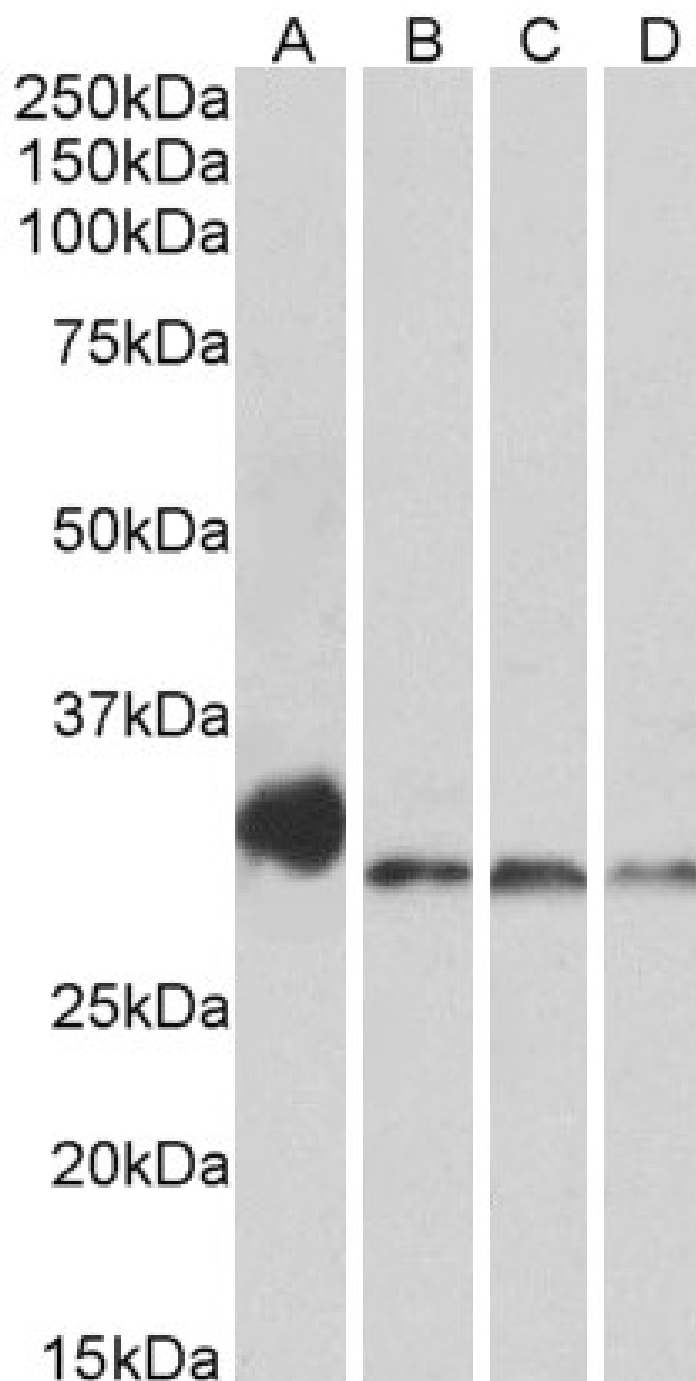


## GOAT ANTI-NEK7 (AA 274-286) ANTIBODY

SKU: EB10520



## SPECIFICATIONS

<b>Formulation</b>	Supplied at 0.5 mg/ml in Tris saline, 0.02% sodium azide, pH7.3 with 0.5% bovine serum albumin.
<b>Unit Size</b>	100 µg
<b>Storage</b>	Aliquot and store at -20°C. Minimize freezing and thawing.
<b>Instructions</b>	
<b>Synonym /</b>	
<b>Alias</b>	NEK7 NIMA-related kinase 7 NIMA (never in mitosis gene a)-related kinase 7
<b>Names</b>	
<b>Accession</b>	
<b>ID</b>	NP_598001.1
<b>Blocking</b>	
<b>Peptide</b>	EBP10520
<b>Immunogen</b>	Peptide with sequence CINPDPEKRPDVT, from the C Terminus of the protein sequence according to NP_598001.1.
<b>Peptide</b>	
<b>Sequence</b>	CINPDPEKRPDVT
<b>Purification</b>	Purified from goat serum by ammonium sulphate precipitation followed by antigen affinity chromatography
<b>Method</b>	using the immunizing peptide.
<b>Shipping</b>	
<b>Instructions</b>	Refrigerated
<b>Predicted</b>	
<b>Species</b>	Human, Mouse, Rat, Dog, Cow
<b>Reactive</b>	
<b>Species</b>	Human, Mouse, Rat
<b>Human</b>	
<b>Gene ID</b>	140609
<b>Mouse</b>	
<b>Gene ID</b>	59125
<b>Rat Gene ID</b>	360850
<b>Product</b>	
<b>Grade</b>	<a href="https://prod-vector-labs-pimcore-assets.s3.us-east-1.amazonaws.com/assets/products/image/elite_medium.png">https://prod-vector-labs-pimcore-assets.s3.us-east-1.amazonaws.com/assets/products/image/elite_medium.png</a>
<b>ELISA</b>	
<b>Detection</b>	Antibody detection limit dilution 1:32000.
<b>Limit</b>	
<b>Western</b>	Approx 30-33kDa band observed in Human Lung and Testis lysates and in Mouse and Rat Lung and Testis
<b>Blot</b>	lysates (calculated MW of 34.6kDa according to Human NP_598001.1 and 34.5kDa according to Mouse NP_067618.1). Recommended concentration: 0.1-0.3µg/ml.
<b>Application</b>	
<b>Type</b>	Pep-ELISA, WB

## DOCUMENTS

- [Data Sheet](#)

## GALLERY IMAGES

