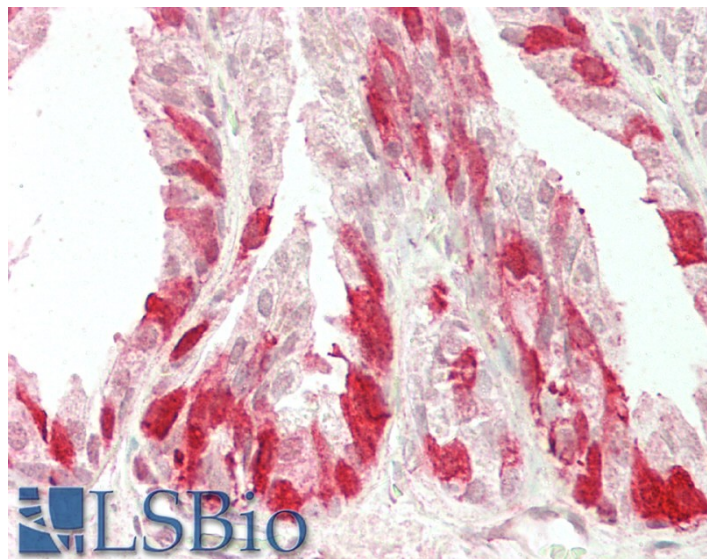


# GOAT ANTI-NELL2 ANTIBODY

**SKU:** EB12278



## SPECIFICATIONS

**Formulation** Supplied at 0.5 mg/ml in Tris saline, 0.02% sodium azide, pH7.3 with 0.5% bovine serum albumin.

**Unit Size** 100 µg

**Storage Instructions** Aliquot and store at -20°C. Minimize freezing and thawing.

**Synonym / Alias Names** protein kinase C-binding protein NELL2|neural epidermal growth factor-like 2|NEL-related protein 2|NEL-like protein 2|NRP2|NEL-like 2 (chicken)|NELL2

**Accession ID** NP\_001138579.1; NP\_006150.1; NP\_001138581.1; NP\_001138582.1

**Blocking Peptide** EBP12278

**Immunogen** Peptide with sequence DPCQADTIRNDITKT, from the internal region (near C terminus) of the protein sequence according to NP\_001138579.1; NP\_006150.1; NP\_001138581.1; NP\_001138582.1.

**Product Comments** This antibody is expected to recognize all reported isoforms (NP\_001138579.1; NP\_006150.1; NP\_001138581.1; NP\_001138582.1). Reported variants represent identical protein: NP\_001138580.1, NP\_006150.1.

**Peptide Sequence** DPCQADTIRNDITKT

<b>Purification Method</b>	Purified from goat serum by ammonium sulphate precipitation followed by antigen affinity chromatography using the immunizing peptide.
<b>Shipping Instructions</b>	Refrigerated
<b>Predicted Species</b>	Human, Mouse, Rat, Dog, Pig, Cow
<b>Reactive Species</b>	Human
<b>Human Gene ID</b>	4753
<b>Mouse Gene ID</b>	54003
<b>Rat Gene ID</b>	81734
<b>Product Grade</b>	<a href="https://prod-vector-labs-pimcore-assets.s3.us-east-1.amazonaws.com/assets/products/image/elite_medium.png">https://prod-vector-labs-pimcore-assets.s3.us-east-1.amazonaws.com/assets/products/image/elite_medium.png</a>
<b>IHC Results</b>	Paraffin embedded Human Prostate. Recommended concentration: 5µg/ml.
<b>ELISA Detection Limit</b>	Antibody detection limit dilution 1:64000.
<b>Western Blot</b>	Preliminary experiments gave an approx 80kDa band in Human Brain (cortex and hippocampus) lysates after 0.5µg/ml antibody staining. Please note that currently we cannot find an explanation in the literature for the band we observe given the calculated size of 94.7kDa for the mature form (aa22-866) according to NP_001138579.1 and 88.8kDa (aa22-816) according to NP_001138580.1. The 80kDa band was successfully blocked by incubation with the immunizing peptide.
<b>Application Type</b>	Pep-ELISA, IHC

## DOCUMENTS

- [Data Sheet](#)

## GALLERY IMAGES

