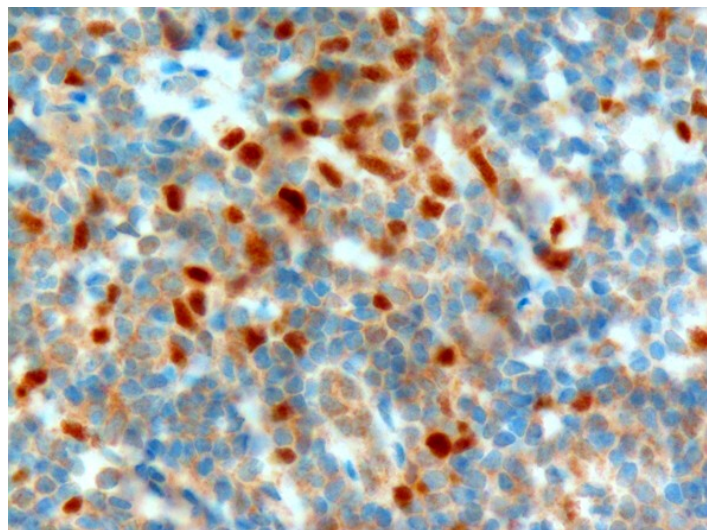


GOAT ANTI-NET1 / ARHGEF8 (C TERMINUS) ANTIBODY

SKU: EB06148



SPECIFICATIONS

Formulation Supplied at 0.5 mg/ml in Tris saline, 0.02% sodium azide, pH7.3 with 0.5% bovine serum albumin.

Unit Size 100 µg

Storage Instructions Aliquot and store at -20°C. Minimize freezing and thawing.

Synonym / Alias Names small GTP-binding protein regulator|p65 Net1 proto-oncogene protein|RP11-116G8.1|neuroepithelial cell transforming 1|guanine nucleotide regulatory protein (oncogene)|Rho guanine nucleotide exchange factor (GEF) 8|neuroepithelial cell transforming gene 1|NET1A|ARHGEF8|NET1

Accession ID NP_001040625.1; NP_005854.2

Blocking Peptide EBP06148

Immunogen Peptide with sequence C-DKALSGGKRKETLV, from the C Terminus of the protein sequence according to NP_001040625.1; NP_005854.2.

Product Comments This antibody is expected to recognize both reported isoforms (NP_001040625.1 and NP_005854.2).

Peptide Sequence C-DKALSGGKRKETLV

Purification Method Purified from goat serum by ammonium sulphate precipitation followed by antigen affinity chromatography using the immunizing peptide.

Shipping Instructions	Refrigerated
Predicted Species	Human, Mouse
Reactive Species	Human
Human Gene ID	10276
Product Grade	https://prod-vector-labs-pimcore-assets.s3.us-east-1.amazonaws.com/assets/products/image/elite_medium.png
IHC Results	In paraffin embedded Human Tonsil shows nuclear staining of many cells in the interfollicular area of the tonsil. Macrophages in germinal centres of secondary follicles are also positive. Recommended concentration, 1-2µg/ml.
ELISA	
Detection Limit	Antibody detection limit dilution 1:128000.
Application Type	Pep-ELISA, IHC

DOCUMENTS

- [Data Sheet](#)

GALLERY IMAGES

