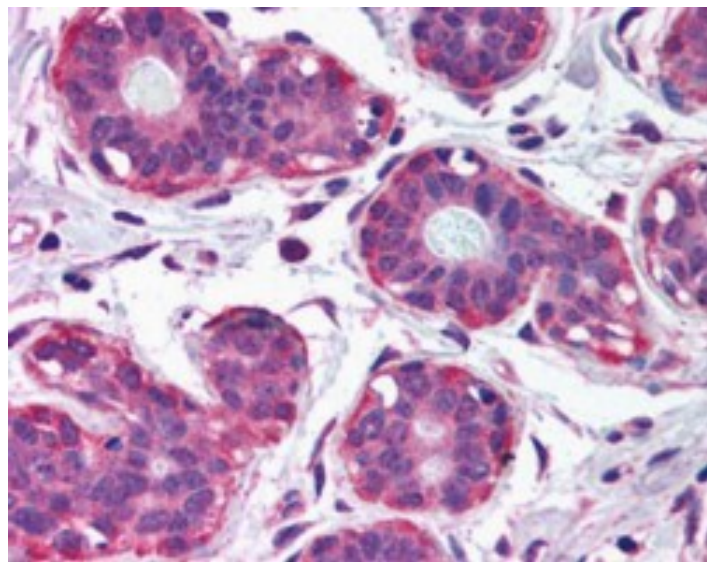


GOAT ANTI-NET1 / ARHGEF8 (INTERNAL) ANTIBODY

SKU: EB07268



SPECIFICATIONS

Formulation Supplied at 0.5 mg/ml in Tris saline, 0.02% sodium azide, pH7.3 with 0.5% bovine serum albumin.

Unit Size 100 µg

Storage Instructions Aliquot and store at -20°C. Minimize freezing and thawing.

Synonym / Alias Names small GTP-binding protein regulator|p65 Net1 proto-oncogene protein|neuroepithelioma transforming gene 1|guanine nucleotide regulatory protein (oncogene)|Rho guanine nucleotide exchange factor (GEF) 8|NET1A|neuroepithelial cell transforming gene 1|ARHGEF8|NET1

Accession ID NP_005854.2; NP_001040625.1

Blocking Peptide EBP07268

Immunogen Peptide with sequence C-DKLEYLDEKQRDPR, from the internal region of the protein sequence according to NP_005854.2; NP_001040625.1.

Product Comments This antibody is expected to recognize both reported isoforms (NP_001040625.1 and NP_005854.2).

Peptide Sequence C-DKLEYLDEKQRDPR

Purification Method Purified from goat serum by ammonium sulphate precipitation followed by antigen affinity chromatography using the immunizing peptide.

Shipping Instructions	Refrigerated
Predicted Species	Human, Mouse, Rat, Dog
Reactive Species	Human
Human Gene ID	10276
Mouse Gene ID	56349
Rat Gene ID	307098
Product Grade	https://prod-vector-labs-pimcore-assets.s3.us-east-1.amazonaws.com/assets/products/image/elite_medium.png
IHC Results	In paraffin embedded Human Breast shows cytoplasm staining of myoepithelial cells of ducts. Recommended concentration: 2.5µg/ml.
ELISA	
Detection Limit	Antibody detection limit dilution 1:16000.
Application Type	Pep-ELISA, IHC

DOCUMENTS

- [Data Sheet](#)

GALLERY IMAGES

