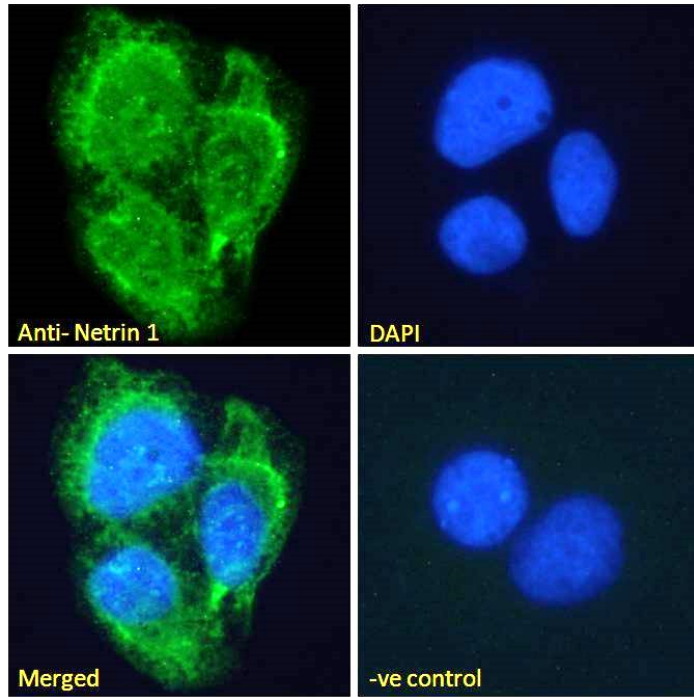




GOAT ANTI-NETRIN 1 ANTIBODY

SKU: EB07007



SPECIFICATIONS

Formulation Supplied at 0.5 mg/ml in Tris saline, 0.02% sodium azide, pH7.3 with 0.5% bovine serum albumin.

Unit Size 100 µg

Storage Instructions Aliquot and store at -20°C. Minimize freezing and thawing.

Synonym /

Alias Names netrin 1, mouse, homolog of|Netrin-1|NTN1L|NTN1|HGNC:8029|netrin 1

Usage Summary Immunofluorescence: Strong expression of the protein seen in the membrane and cytoplasm of U2OS cells. Recommended concentration: 10µg/ml.

Accession ID NP_004813.2

Blocking Peptide EBP07007

Immunogen Peptide with sequence KFQQREKKGKCKKA, from the C Terminus of the protein sequence according to NP_004813.2.



Peptide Sequence	KFQQREKKGKCKKA
Purification Method	Purified from goat serum by ammonium sulphate precipitation followed by antigen affinity chromatography using the immunizing peptide.
Shipping Instructions	Refrigerated
Predicted Species	Human, Mouse, Rat, Dog, Cow
Reactive Species	Human
Human Gene ID	9423
Mouse Gene ID	18208
Rat Gene ID	114523
Product Grade	https://prod-vector-labs-pimcore-assets.s3.us-east-1.amazonaws.com/assets/products/image/elite_medium.png
ELISA Detection Limit	Antibody detection limit dilution 1:32000.
Application Type	Pep-ELISA, IF

SELECTED REFERENCES

[{"pmid": 24510764, "intro": "**This antibody (previous batch) has been successfully used in Western blot on Human:**", "title": "Netrin-1, a urinary proximal tubular injury marker, is elevated early in the time course of human diabetes.", "author": "Jayakumar C, Nauta FL, Bakker SJ, Bilo H, Gansevoort RT, Johnson MH, Ramesh G.", "journal": "J Nephrol. 2014 Apr;27(2):151-7."}, {"pmid": 24052471, "intro": "**This antibody (previous batch) has been successfully used in Western blot on Human and Mouse:**", "title": "Tubular injury marker netrin-1 is elevated early in experimental diabetes.", "author": "White JJ, Mohamed R, Jayakumar C, Ramesh G.", "journal": "J Nephrol. 2013 Nov-Dec;26(6):1055-64."}]

DOCUMENTS

- [Data Sheet](#)

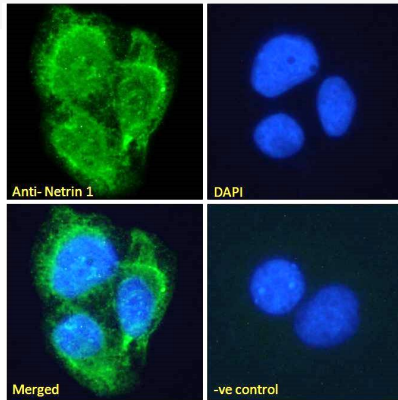
GALLERY IMAGES



www.everestbiotech.com

Email: customerservice@vectorlabs.com

Telephone: [\(650\) 697-3600](tel:(650)697-3600)



Goat Anti-Netrin 1 Antibody

<https://everestbiotech.com/products/goat-anti-netrin-1-antibody/>