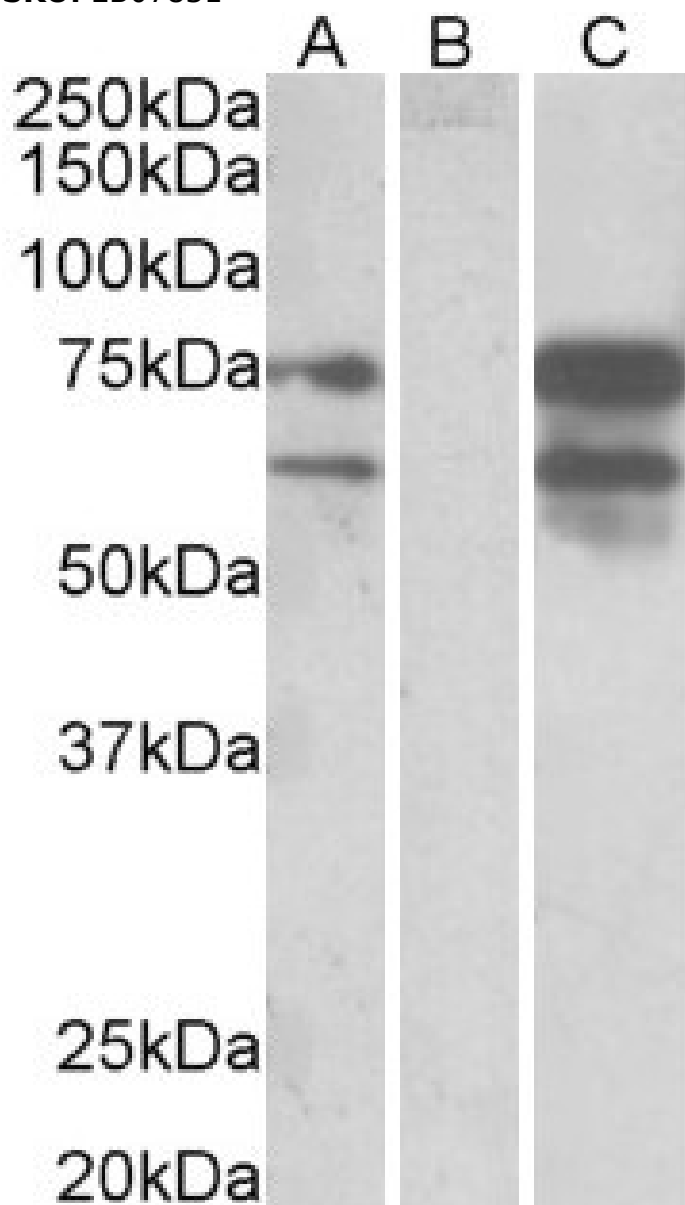


GOAT ANTI-NEUREXIN 1 ANTIBODY

SKU: EB07831



SPECIFICATIONS

Formulation	Supplied at 0.5 mg/ml in Tris saline, 0.02% sodium azide, pH7.3 with 0.5% bovine serum albumin.
Unit Size	100 µg
Storage	Aliquot and store at -20°C. Minimize freezing and thawing.
Instructions	
Synonym /	
Alias	neurexin I KIAA0578 Hs.22998 FLJ35941 NRXN1 DKFZp313P2036 neurexin 1
Names	
Usage	Flow Cytometry: Flow cytometric analysis of Kelly cells. Recommended concentration:
Summary	10ug/ml.
Accession	
ID	NP_004792.1 ; NP_620072.1
Blocking	
Peptide	EBP07831
Immunogen	Peptide with sequence C-KEKPSSAKSSNKN, from the C Terminus of the protein sequence according to NP_004792.1 ; NP_620072.1.
Product	
Comments	This antibody is expected to recognise all reported isoforms.
Peptide	
Sequence	C-KEKPSSAKSSNKN
Purification	Purified from goat serum by ammonium sulphate precipitation followed by antigen affinity chromatography
Method	using the immunizing peptide.
Shipping	
Instructions	Refrigerated
Predicted	
Species	Human, Mouse, Rat, Dog
Reactive	
Species	Human
Human	
Gene ID	9378
Mouse	
Gene ID	18189
Rat Gene ID	60391
Product	
Grade	https://prod-vector-labs-pimcore-assets.s3.us-east-1.amazonaws.com/assets/products/image/elite_medium.png
ELISA	
Detection	Antibody detection limit dilution 1:128000.
Limit	
Western	
Blot	In transfected HEK293 transiently expressing full-length Human NRXN1 (myc and DYKDDDDK tagged), bands of approx. 75 and 60kDa were observed. No bands were observed in mock-transfected HEK293 and the same band was observed using anti-DYKDDDDK tag antibody. Recommended concentration: 0.5-1µg/ml. Primary incubations were for 1 hour.
Application	
Type	Pep-ELISA, WB, FC

DOCUMENTS

- [Data Sheet](#)

GALLERY IMAGES

