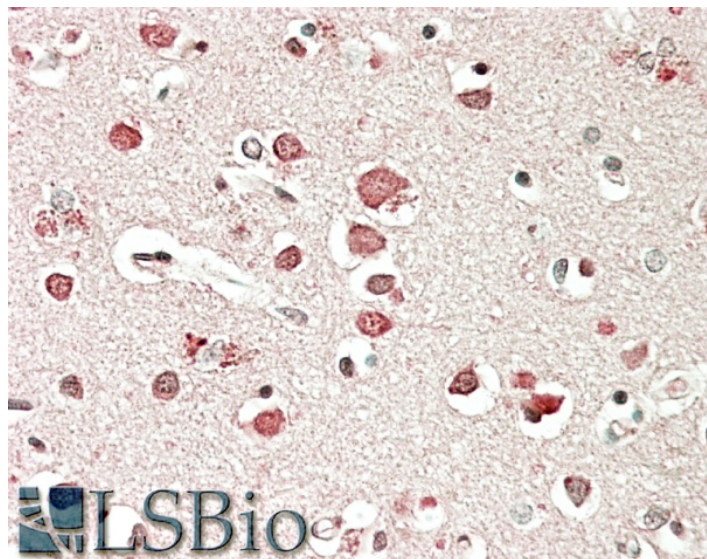


GOAT ANTI-NEUROBEACHIN ANTIBODY

SKU: EB06147



SPECIFICATIONS

Formulation Supplied at 0.5 mg/ml in Tris saline, 0.02% sodium azide, pH7.3 with 0.5% bovine serum albumin.

Unit Size 100 µg

Storage Instructions Aliquot and store at -20°C. Minimize freezing and thawing.

Synonym / Alias Names lysosomal trafficking regulator 2|lysosomal trafficking regulator|LYST2|KIAA1544|FLJ10197|BCL8B|RP11-270C18.1|neurobeachin|NBEA

Accession ID NP_056493.3; NP_001191126.1

Blocking Peptide EBP06147

Immunogen Peptide with sequence C-DFNRWHYEHQNRV, from the C Terminus of the protein sequence according to NP_056493.3; NP_001191126.1.

Product Comments This antibody is expected to recognise isoform 1 (NP_056493.3) and isoform 2 (NP_001191126.1).

Peptide Sequence C-DFNRWHYEHQNRV

Purification Method Purified from goat serum by ammonium sulphate precipitation followed by antigen affinity chromatography using the immunizing peptide.

Shipping Instructions	Refrigerated
Predicted Species	Human, Mouse, Dog, Cow
Reactive Species	Human
Human Gene ID	26960
Mouse Gene ID	26422
Product Grade	https://prod-vector-labs-pimcore-assets.s3.us-east-1.amazonaws.com/assets/products/image/elite_medium.png
IHC Results	In paraffin embedded Human Cerebral Cortex shows textured cytoplasm staining in the neuronal cell bodies. Recommended concentration: 5-10µg/ml.
ELISA	
Detection Limit	Antibody detection limit dilution 1:4000.
Application Type	Pep-ELISA, IHC

DOCUMENTS

- [Data Sheet](#)

GALLERY IMAGES

