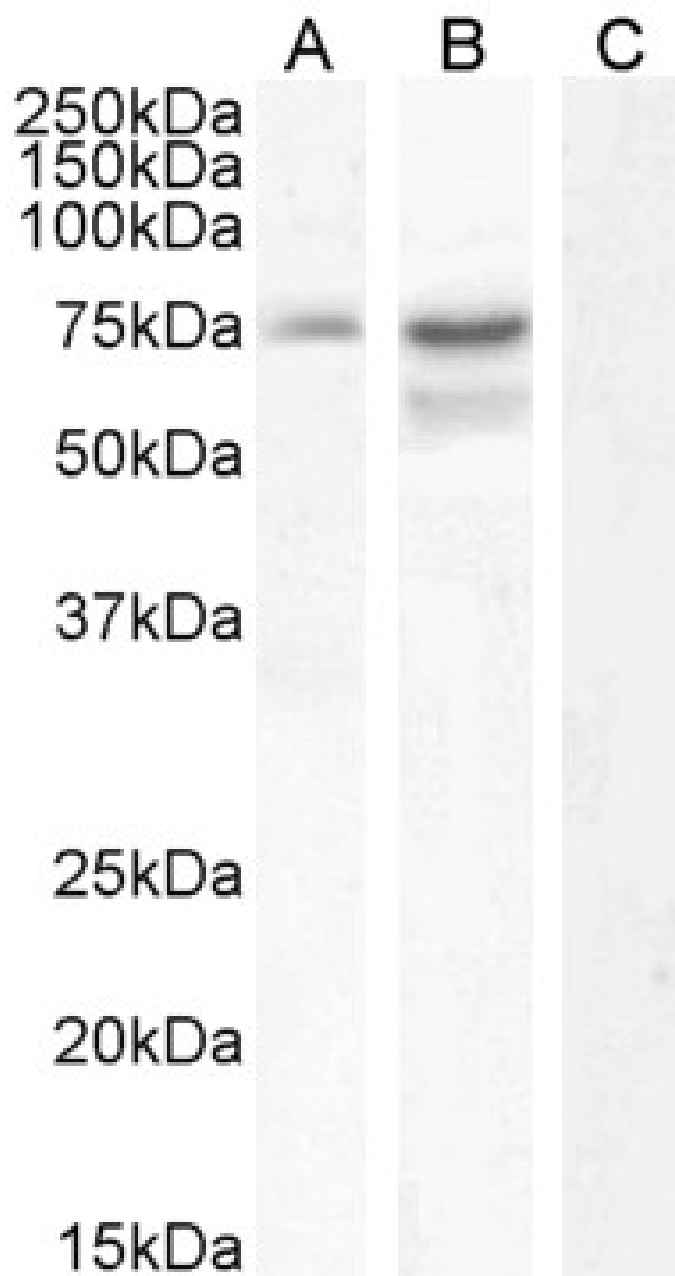


GOAT ANTI-NEUROCHONDRIN ANTIBODY

SKU: EB07600



SPECIFICATIONS

Formulation	Supplied at 0.5 mg/ml in Tris saline, 0.02% sodium azide, pH7.3 with 0.5% bovine serum albumin.
Unit Size	100 µg
Storage	Aliquot and store at -20°C. Minimize freezing and thawing.
Instructions	
Synonym /	
Alias	NCDN neurochondrin KIAA0607
Names	
Accession ID	NP_055099.1; NP_001014841.1
Blocking Peptide	EBP07600
Immunogen	Peptide with sequence C-HYLLQVGSEKQKEP, from the internal region of the protein sequence according to NP_055099.1; NP_001014841.1.
Product Comments	This antibody is expected to recognize both reported isoforms (NP_055099.1; NP_001014841.1). Reported variants represent identical protein (NP_055099.1; NP_001014839.1).
Peptide Sequence	C-HYLLQVGSEKQKEP
Purification Method	Purified from goat serum by ammonium sulphate precipitation followed by antigen affinity chromatography using the immunizing peptide.
Shipping Instructions	Refrigerated
Predicted Species	Human, Mouse, Rat, Dog, Cow
Reactive Species	Human
Human Gene ID	23154
Mouse Gene ID	26562
Rat Gene ID	89791
Product Grade	https://prod-vector-labs-pimcore-assets.s3.us-east-1.amazonaws.com/assets/products/image/elite_medium.png
ELISA	
Detection Limit	Antibody detection limit dilution 1:16000.
Western Blot	Approx 75kDa band observed in lysates of cell lines HepG2 and U251 (calculated MW of 77.2kDa according to NP_001014841.1). An additional band of unknown identity was also observed in U251 lysates at 55kDa. This band was successfully blocked by incubation with the immunizing peptide. Recommended concentration: 0.3-1µg/ml. Primary incubation 1 hour at room temperature. Preliminary testing was unsuccessful on Rat and Mouse Kidney and Brain and NIH3T3 cell line for this particular batch.
Application Type	Pep-ELISA, WB

DOCUMENTS

- [Data Sheet](#)

GALLERY IMAGES

