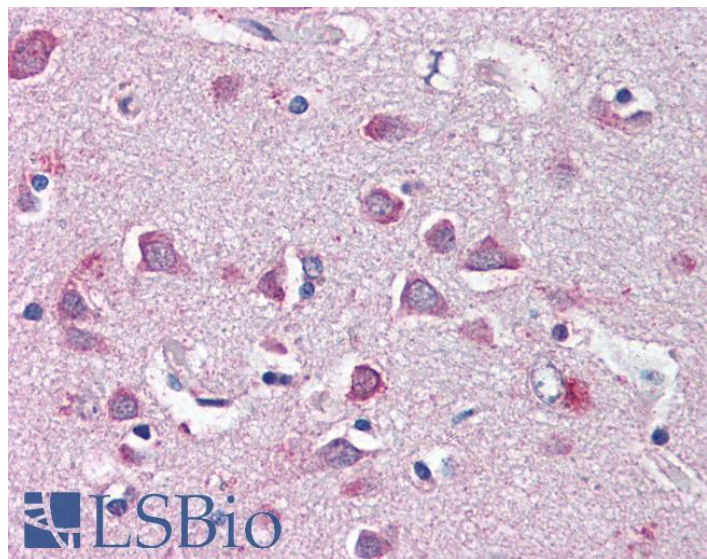


GOAT ANTI-NEUROFIBROMIN 2 (ZEBRAFISH) ANTIBODY

SKU: EB07955



SPECIFICATIONS

Formulation Supplied at 0.5 mg/ml in Tris saline, 0.02% sodium azide, pH7.3 with 0.5% bovine serum albumin.

Unit Size 100 µg

Storage Instructions Aliquot and store at -20°C. Minimize freezing and thawing.

Synonym /

Alias NF2a|MGC123124|neurofibromin 2 (bilateral acoustic neuroma)|nf2

Names

Accession ID NP_998116.1

Blocking Peptide EBP07955

Immunogen Peptide with sequence C-EKSKHLQDQLK, from the internal region of the protein sequence according to NP_998116.1.

Peptide Sequence C-EKSKHLQDQLK

Purification Method Purified from goat serum by ammonium sulphate precipitation followed by antigen affinity chromatography using the immunizing peptide.

Shipping Instructions Refrigerated

Predicted Species	Zebrafish
Reactive Species	Human, Zebrafish
Product Grade	https://prod-vector-labs-pimcore-assets.s3.us-east-1.amazonaws.com/assets/products/image/elite_medium.png
IHC Results	Paraffin embedded Human Brain (Cortex). Recommended concentration: 5µg/ml. This product has been successfully used by customers on Formalin/PFA-fixed paraffin-embedded sections of Zebrafish Brain (Cortex).
ELISA	
Detection Limit	Antibody detection limit dilution 1:32000.
Application Type	Pep-ELISA, IHC

DOCUMENTS

- [Data Sheet](#)

GALLERY IMAGES

