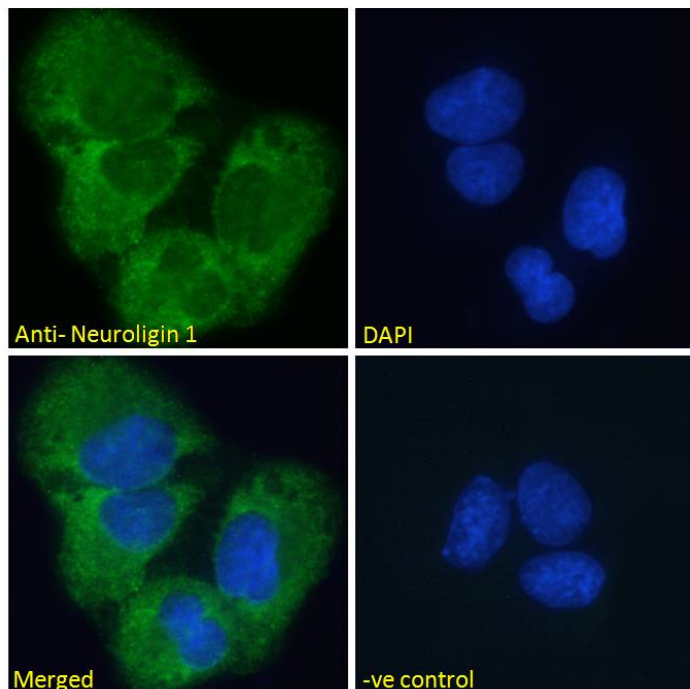


# GOAT ANTI-NEUROLIGIN 1 ANTIBODY

SKU: EB06865



## SPECIFICATIONS

**Formulation** Supplied at 0.5 mg/ml in Tris saline, 0.02% sodium azide, pH7.3 with 0.5% bovine serum albumin.

**Unit Size** 100 µg

**Storage Instructions** Aliquot and store at -20°C. Minimize freezing and thawing.

**Synonym /**

**Alias** NLGN1|KIAA1070|MGC45115|neuroligin 1|OTTHUMP00000211275|OTTHUMP00000211276

**Names**

**Usage** <strong>Immunofluorescence:</strong> Strong expression of the protein seen in the membranes/ cytoplasm of U251 and U2OS cells. Recommended concentration: 10µg/ml.

**Summary**

**Accession ID** NP\_055747.1

**Blocking Peptide** EBP06865

**Immunogen** Peptide with sequence C-TAKQDDPKQQ, from the internal region of the protein sequence according to NP\_055747.1.

<b>Peptide Sequence</b>	C-TAKQDDPKQQ
<b>Purification Method</b>	Purified from goat serum by ammonium sulphate precipitation followed by antigen affinity chromatography using the immunizing peptide.
<b>Shipping Instructions</b>	Refrigerated
<b>Predicted Species</b>	Human, Mouse, Rat, Dog, Cow
<b>Reactive Species</b>	Human
<b>Human Gene ID</b>	22871
<b>Product Grade</b>	<a href="https://prod-vector-labs-pimcore-assets.s3.us-east-1.amazonaws.com/assets/products/image/elite_medium.png">https://prod-vector-labs-pimcore-assets.s3.us-east-1.amazonaws.com/assets/products/image/elite_medium.png</a>
<b>ELISA Detection Limit</b>	Antibody detection limit dilution 1:4000.
<b>Western Blot</b>	Preliminary experiments gave an approx 150kDa band in Human Brain lysates after 1µg/ml antibody staining. Please note that currently we cannot find an explanation in the literature for the band we observe given the calculated size of 92.0 kDa according to NP_055747.1. The 150kDa band was successfully blocked by incubation with the immunizing peptide.
<b>Application Type</b>	Pep-ELISA, IF

## DOCUMENTS

- [Data Sheet](#)

## GALLERY IMAGES

