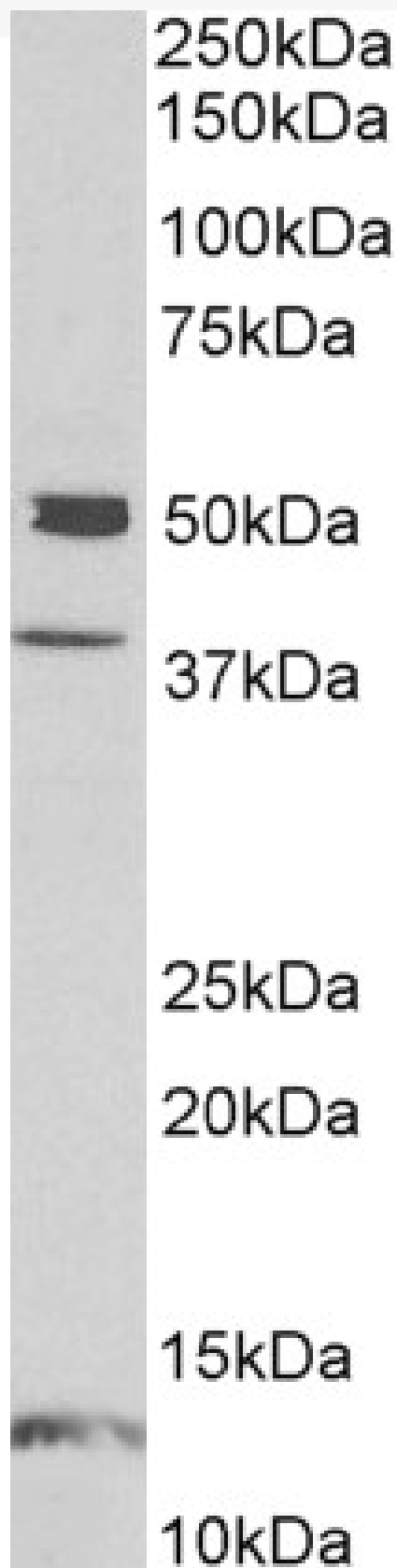


GOAT ANTI-NEURONAL PENTRAXIN 1 ANTIBODY

SKU: EB12221



SPECIFICATIONS

Formulation	Supplied at 0.5 mg/ml in Tris saline, 0.02% sodium azide, pH7.3 with 0.5% bovine serum albumin.
Unit Size	100 µg
Storage Instructions	Aliquot and store at -20°C. Minimize freezing and thawing.
Synonym / Alias Names	neuronal pentraxin-1 NP-I NP1 neuronal pentraxin I NPTX1
Accession ID	NP_002513.2
Blocking Peptide	EBP12221
Immunogen	Peptide with sequence C-ERVKIETALTSQHQR, from the internal region of the protein sequence according to NP_002513.2.
Peptide Sequence	C-ERVKIETALTSQHQR
Purification Method	Purified from goat serum by ammonium sulphate precipitation followed by antigen affinity chromatography using the immunizing peptide.
Shipping Instructions	Refrigerated
Predicted Species	Human
Reactive Species	Human
Human Gene ID	4884
Product Grade	https://prod-vector-labs-pimcore-assets.s3.us-east-1.amazonaws.com/assets/products/image/elite_medium.png
IHC Results	Paraffin embedded Human Brain (Cerebellum). Recommended concentration: 5µg/ml.
ELISA Detection Limit	Antibody detection limit dilution 1:128000.
Western Blot	Approx 50kDa band observed in Human Brain (Amygdala and Frontal Cortex) lysates (calculated MW of 47.1kDa according to NP_002513.2). Recommended concentration: 1-3µg/ml. Primary incubation was 1 hour. Additional bands of unknown identity was also consistently observed at 38 and 14kDa. These bands were successfully blocked by incubation with the immunizing peptide.
Application Type	Pep-ELISA, WB, IHC

DOCUMENTS

- [Data Sheet](#)

GALLERY IMAGES

