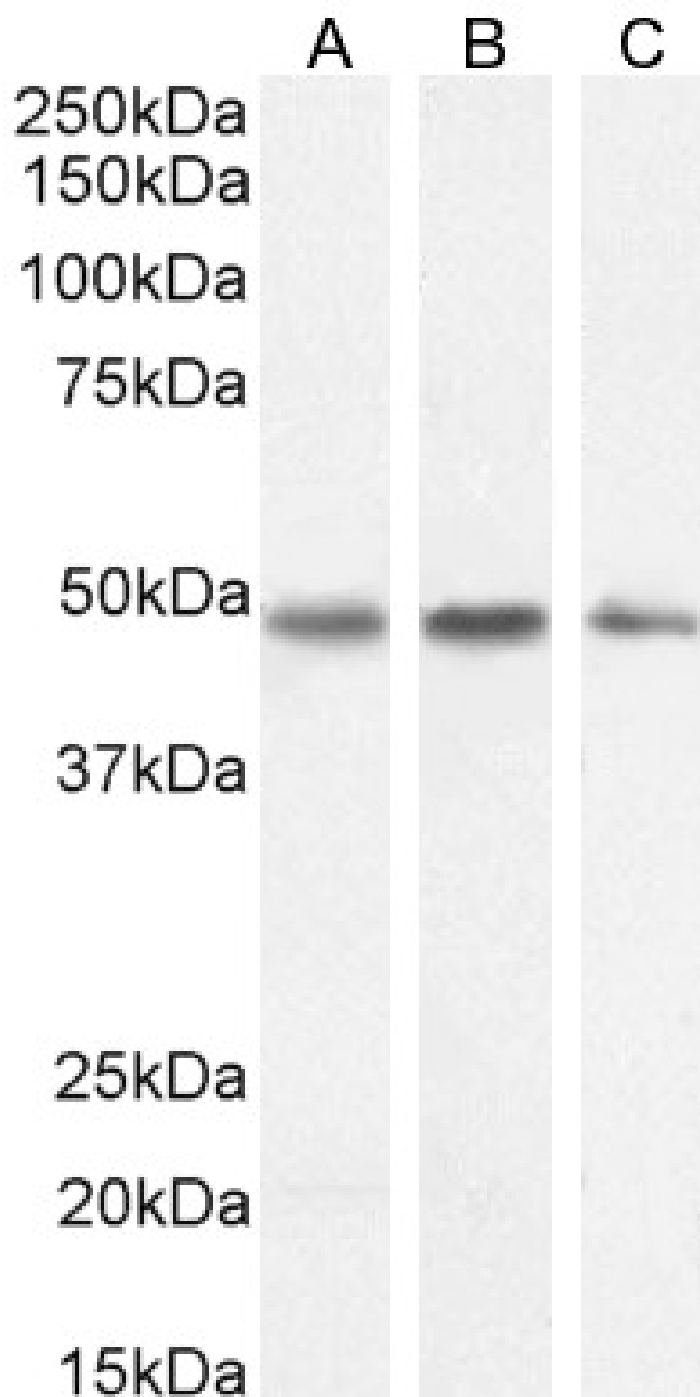


## GOAT ANTI-NEUROSERPIN ANTIBODY

**SKU:** EB06688



## SPECIFICATIONS

<b>Formulation</b>	Supplied at 0.5 mg/ml in Tris saline, 0.02% sodium azide, pH7.3 with 0.5% bovine serum albumin.
<b>Unit Size</b>	100 µg
<b>Storage Instructions</b>	Aliquot and store at -20°C. Minimize freezing and thawing.
<b>Synonym / Alias Names</b>	DKFZp781N13156 serpin peptidase inhibitor, clade I (neuroserpin), member 1 protease inhibitor 12 (neuroserpin) serine (or cysteine) proteinase inhibitor, clade I (neuroserpin), member 1 PI12 SERPINI1 neuroserpin
<b>Usage Summary</b>	<strong>Flow Cytometry:</strong> Flow cytometric analysis of HeLa cells. Recommended concentration: 10ug/ml.
<b>Accession ID</b>	NP_005016.1
<b>Blocking Peptide</b>	EBP06688
<b>Immunogen</b>	Peptide with sequence C-TMNTSGHDFEEL, from the C Terminus of the protein sequence according to NP_005016.1.
<b>Product Comments</b>	Reported variants represent identical protein (NP_005016.1; NP_001116224.1).
<b>Peptide Sequence</b>	C-TMNTSGHDFEEL
<b>Purification Method</b>	Purified from goat serum by ammonium sulphate precipitation followed by antigen affinity chromatography using the immunizing peptide.
<b>Shipping Instructions</b>	Refrigerated
<b>Predicted Species</b>	Human, Mouse, Rat, Pig, Cow
<b>Reactive Species</b>	Human, Mouse, Rat
<b>Human Gene ID</b>	5274
<b>Product Grade</b>	<a href="https://prod-vector-labs-pimcore-assets.s3.us-east-1.amazonaws.com/assets/products/image/elite_plus_medium.png">https://prod-vector-labs-pimcore-assets.s3.us-east-1.amazonaws.com/assets/products/image/elite_plus_medium.png</a>
<b>IHC Results</b>	Paraffin embedded Human Brain (Cortex). Recommended concentration: 5µg/ml.
<b>ELISA Detection Limit</b>	Antibody detection limit dilution 1:32000.
<b>Western Blot</b>	Approx 48kDa band observed in lysates of cell lines Kelly and K562 and in Human Placenta and Mouse and Rat Brain lysates (calculated MW of 46.4kDa according to Human NP_005016.1, Mouse NP_033276.1 and Rat NP_446231.1). Recommended concentration: 0.5-2ug/ml. Primary incubation 1 hour at room temperature.
<b>Application Type</b>	Pep-ELISA, WB, IHC, FC

## DOCUMENTS

- [Data Sheet](#)

## GALLERY IMAGES

