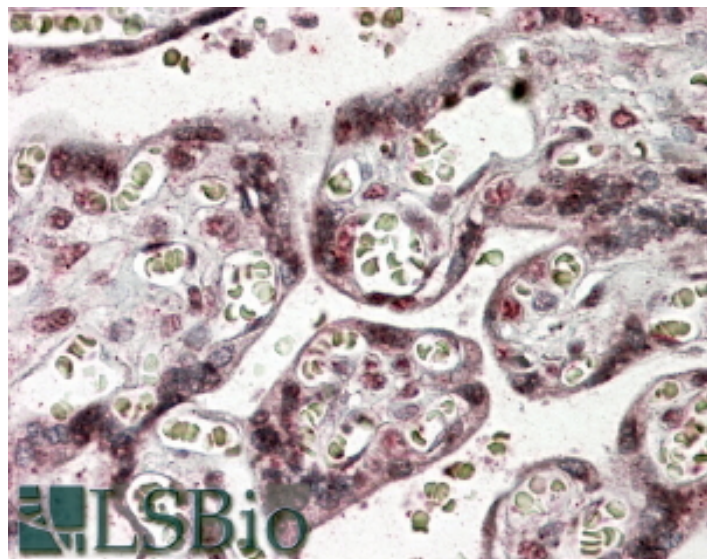


GOAT ANTI-NFATC4 ANTIBODY

SKU: EB05562



SPECIFICATIONS

Formulation	Supplied at 0.5 mg/ml in Tris saline, 0.02% sodium azide, pH7.3 with 0.5% bovine serum albumin.
Unit Size	100 µg
Storage Instructions	Aliquot and store at -20°C. Minimize freezing and thawing.
Synonym / Alias Names	nuclear factor of activated T-cells, cytoplasmic 4 T cell transcription factor NFAT3 nuclear factor of activated T-cells, cytoplasmic, calcineurin-dependent 4 NF-ATc4 NFAT3 NFATC4
Accession ID	NP_004545.2; NP_001185894.1; NP_001185895.1; NP_001185896.1
Blocking Peptide	EBP05562
Immunogen	Peptide with sequence C-SGFPAPPGEPPA, from the C Terminus of the protein sequence according to NP_004545.2; NP_001185894.1; NP_001185895.1; NP_001185896.1.
Product Comments	This antibody is expected to recognise isoform 2, 3, 4 and 5 (NP_004545.2; NP_001185894.1; NP_001185895.1; NP_001185896.1 respectively).
Peptide Sequence	C-SGFPAPPGEPPA
Purification Method	Purified from goat serum by ammonium sulphate precipitation followed by antigen affinity chromatography using the immunizing peptide.

Shipping Instructions	Refrigerated
Predicted Species	Human, Mouse, Rat, Dog, Pig
Reactive Species	Human
Human Gene ID	4776
Product Grade	https://prod-vector-labs-pimcore-assets.s3.us-east-1.amazonaws.com/assets/products/image/elite_medium.png
IHC Results	In paraffin embedded Human Placenta shows weak nuclear staining in trophoblasts.. Recommended concentration, 2.5-3.8µg/ml.
ELISA	
Detection Limit	Antibody detection limit dilution 1:16000.
Western Blot	No signal obtained yet but low background observed in MOLT-4, Jurkat, A431, HeLa, Human Brain and Human Heart lysates at upto 2µg/ml.
Application Type	Pep-ELISA, IHC

DOCUMENTS

- [Data Sheet](#)

GALLERY IMAGES

