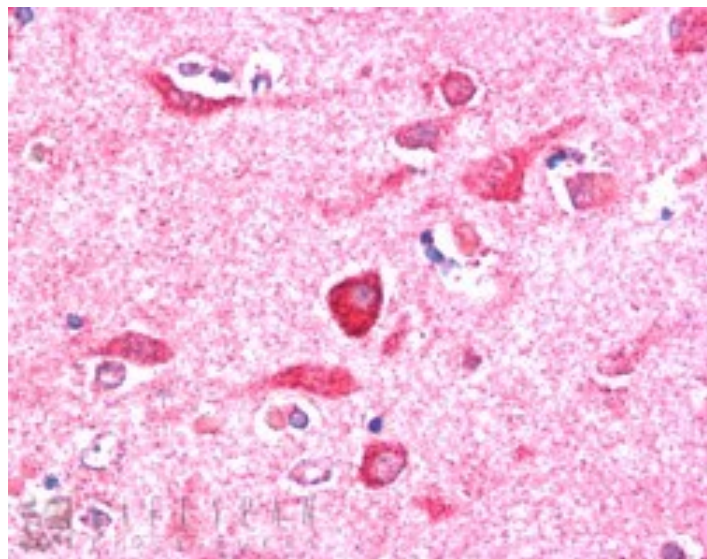


GOAT ANTI-NIR1 / PITPNM3 ANTIBODY

SKU: EB06334



SPECIFICATIONS

Formulation Supplied at 0.5 mg/ml in Tris saline, 0.02% sodium azide, pH7.3 with 0.5% bovine serum albumin.

Unit Size 100 µg

Storage Instructions Aliquot and store at -20°C. Minimize freezing and thawing.

Synonym / Alias retinal degeneration B alpha 3|membrane-associated phosphatidylinositol transfer protein

Names 3|MGC157741|MGC157740|CORD5|PITPNM3|RDGBA3|PYK2 N-terminal domain-interacting receptor 1|PITPNM

family member 3|NIR1

Accession ID NP_112497.2; NP_001159438.1

Blocking Peptide EBP06334

Immunogen Peptide with sequence C-SWARGPPKFESVP, from the C Terminus of the protein sequence according to NP_112497.2; NP_001159438.1.

Peptide Sequence C-SWARGPPKFESVP

Purification Method Purified from goat serum by ammonium sulphate precipitation followed by antigen affinity chromatography using the immunizing peptide.

Shipping Instructions Refrigerated

Predicted Species	Human, Mouse, Dog
Reactive Species	Human
Human Gene ID	83394
Product Grade	https://prod-vector-labs-pimcore-assets.s3.us-east-1.amazonaws.com/assets/products/image/elite_medium.png
IHC Results	In paraffin embedded Human Cerebral Cortex shows strong staining of cytoplasm in several neuronal cells. Recommended concentration, 5-10µg/ml.
ELISA	
Detection Limit	Antibody detection limit dilution 1:16000.
Application Type	Pep-ELISA, IHC

DOCUMENTS

- [Data Sheet](#)

GALLERY IMAGES

