



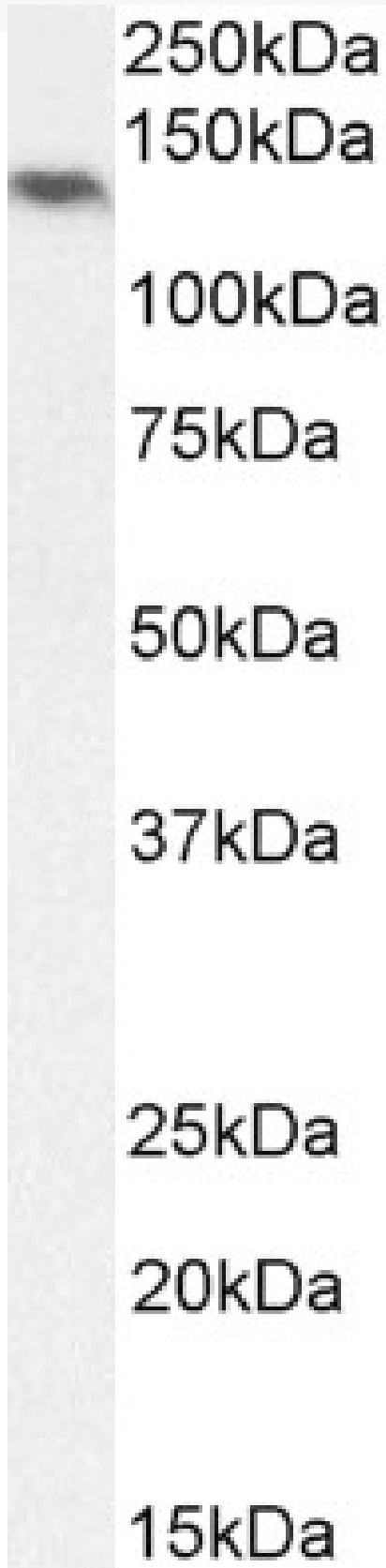
www.everestbiotech.com

Email: customerservice@vectorlabs.com

Telephone: [\(650\) 697-3600](tel:(650)697-3600)

GOAT ANTI-NLRP5 (C-TERMINUS) ANTIBODY

SKU: EB12894





SPECIFICATIONS

Formulation	Supplied at 0.5 mg/ml in Tris saline, 0.02% sodium azide, pH7.3 with 0.5% bovine serum albumin.
Unit Size	100 µg
Storage Instructions	Aliquot and store at -20°C. Minimize freezing and thawing.
Synonym / Alias Names	NLRP5 NLR family, pyrin domain containing 5 MATER NALP5 PAN11 PYPAF8 CLR19.8
Accession ID	NP_703148.4
Blocking Peptide	EBP12894
Immunogen	Peptide with sequence C-DGSWHSFDEDDR, from the C-Terminus of the protein sequence according to NP_703148.4.
Peptide Sequence	C-DGSWHSFDEDDR
Purification Method	Purified from goat serum by ammonium sulphate precipitation followed by antigen affinity chromatography using the immunizing peptide.
Shipping Instructions	Refrigerated
Predicted Species	Human
Reactive Species	Human
Human Gene ID	126206
Product Grade	https://prod-vector-labs-pimcore-assets.s3.us-east-1.amazonaws.com/assets/products/image/elite_medium.png
ELISA Detection Limit	Antibody detection limit dilution 1:128000.
Western Blot	Approx 130kDa band observed in Human Ovary lysates (calculated MW of 134kDa according to NP_703148.4). Recommended concentration: 1-3µg/ml.
Application Type	Pep-ELISA, WB

DOCUMENTS

- [Data Sheet](#)



www.everestbiotech.com

Email: customerservice@vectorlabs.com

Telephone: [\(650\) 697-3600](tel:(650)697-3600)

GALLERY IMAGES

