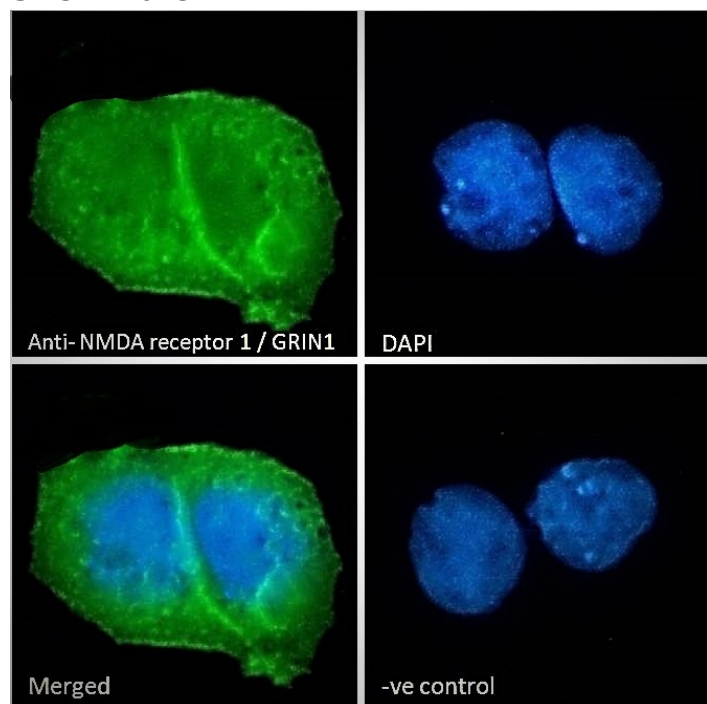


## GOAT ANTI-NMDA RECEPTOR 1 / GRIN1 ANTIBODY

SKU: EB07341



## SPECIFICATIONS

**Formulation** Supplied at 0.5 mg/ml in Tris saline, 0.02% sodium azide, pH7.3 with 0.5% bovine serum albumin.

**Unit Size** 100 µg

**Storage Instructions** Aliquot and store at -20°C. Minimize freezing and thawing.

**Synonym / Alias Names** glutamate [NMDA] receptor subunit zeta 1|N-methyl-D-aspartate receptor channel, subunit zeta-1|NR1|NMDAR1|NMDA1|glutamate receptor, ionotropic, N-methyl D-aspartate 1|NMDA receptor 1|GRIN1

**Usage Summary** **Immunofluorescence:** Strong expression of the protein seen in the membrane and cytoplasm of MCF7 and NIH3T3 cells. Recommended concentration: 10µg/ml.

**Accession ID** NP\_000823.4; NP\_067544.1; NP\_015566.1

**Blocking Peptide** EBP07341

**Immunogen** Peptide with sequence C-TQERVNNSNKKE, from the internal region of the protein sequence according to NP\_000823.4; NP\_067544.1; NP\_015566.1.

<b>Product Comments</b>	This antibody is expected to recognise all three reported isoforms (NP_000823.4; NP_067544.1; NP_015566.1).
<b>Peptide Sequence</b>	C-TQERVNNSNKKE
<b>Purification Method</b>	Purified from goat serum by ammonium sulphate precipitation followed by antigen affinity chromatography using the immunizing peptide.
<b>Shipping Instructions</b>	Refrigerated
<b>Predicted Species</b>	Human, Mouse, Rat, Dog
<b>Reactive Species</b>	Human, Mouse
<b>Human Gene ID</b>	2902
<b>Mouse Gene ID</b>	14810
<b>Rat Gene ID</b>	24408
<b>Product Grade</b>	<a href="https://prod-vector-labs-pimcore-assets.s3.us-east-1.amazonaws.com/assets/products/image/elite_medium.png">https://prod-vector-labs-pimcore-assets.s3.us-east-1.amazonaws.com/assets/products/image/elite_medium.png</a>
<b>ELISA Detection Limit</b>	Antibody detection limit dilution 1:32000.
<b>Application Type</b>	Pep-ELISA, IF

## DOCUMENTS

- [Data Sheet](#)

## GALLERY IMAGES

