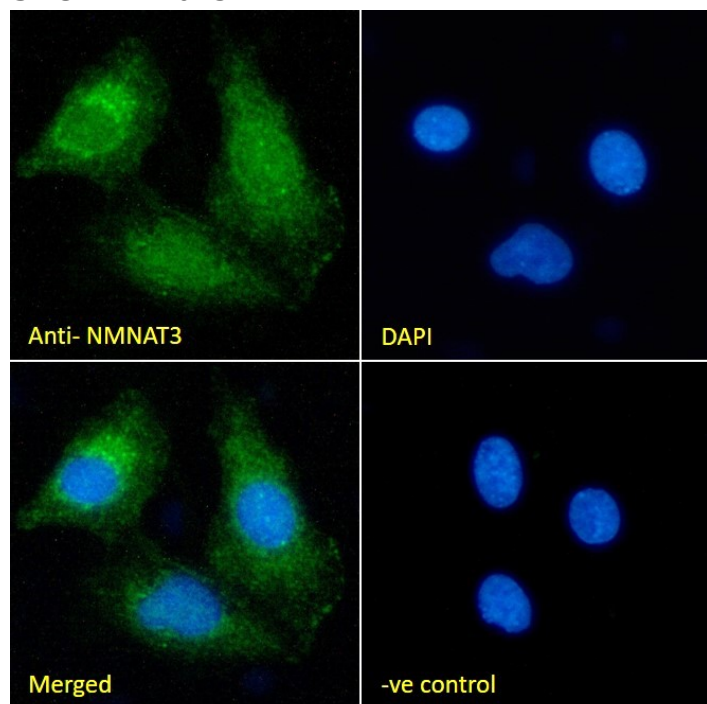


## GOAT ANTI-NMNAT3 (AA149-162) ANTIBODY

SKU: EB11023



## SPECIFICATIONS

**Formulation** Supplied at 0.5 mg/ml in Tris saline, 0.02% sodium azide, pH7.3 with 0.5% bovine serum albumin.

**Unit Size** 100 µg

**Storage Instructions** Aliquot and store at -20°C. Minimize freezing and thawing.

**Synonym / Alias Names** NMNAT3| pyridine nucleotide adenylyltransferase 3| PNAT3| NMN adenylyltransferase 3| nicotinate-nucleotide adenylyltransferase 3| nicotinamide nucleotide adenylyltransferase 3| nicotinamide mononucleotide adenylyltransferase 3| NaMN adenylyltransferase 3| pyridine nucleotide adenylyltransferase 3| nicotinate-nucleotide adenylyltransferase 3| nicotinamide mononucleotide adenylyltransferase 3| NaMN adenylyltransferase 3| NMN adenylyltransferase 3| PNAT3| nicotinamide nucleotide adenylyltransferase 3|NMNAT3

**Usage Summary** **Immunofluorescence:** Strong expression of the protein seen in HEK293 cells. Recommended concentration: 10µg/ml. **Flow Cytometry:** Flow cytometric analysis of HEK293 cells. Recommended concentration: 10ug/ml.

**Accession ID** NP\_835471.1; NP\_001186976.1; NP\_001307439.1; NP\_001307440.1; NP\_001307442.1

<b>Blocking Peptide</b>	EBP11023
<b>Immunogen</b>	Peptide with sequence C-QHNIHLAKEPVQNE, from the internal region of the protein sequence according to NP_835471.1; NP_001186976.1; NP_001307439.1; NP_001307440.1; NP_001307442.1.
<b>Product Comments</b>	This antibody is expected to recognize all reported isoforms
<b>Peptide Sequence</b>	C-QHNIHLAKEPVQNE
<b>Purification Method</b>	Purified from goat serum by ammonium sulphate precipitation followed by antigen affinity chromatography using the immunizing peptide.
<b>Shipping Instructions</b>	Refrigerated
<b>Predicted Species</b>	Human, Dog
<b>Reactive Species</b>	Human
<b>Human Gene ID</b>	349565
<b>Product Grade</b>	<a href="https://prod-vector-labs-pimcore-assets.s3.us-east-1.amazonaws.com/assets/products/image/elite_medium.png">https://prod-vector-labs-pimcore-assets.s3.us-east-1.amazonaws.com/assets/products/image/elite_medium.png</a>
<b>ELISA Detection Limit</b>	Antibody detection limit dilution 1:32000.
<b>Western Blot</b>	Preliminary testing showed a band at approx. 26kDa in Caco-2, A431 and A549 cell lysate at a concentration of 2ug/ml (calculated Mwt. of 24.1kDa according to NP_835471.1). Primary incubation 1 hour at room temperature.
<b>Application Type</b>	Pep-ELISA, IF, FC

## DOCUMENTS

- [Data Sheet](#)

## GALLERY IMAGES

