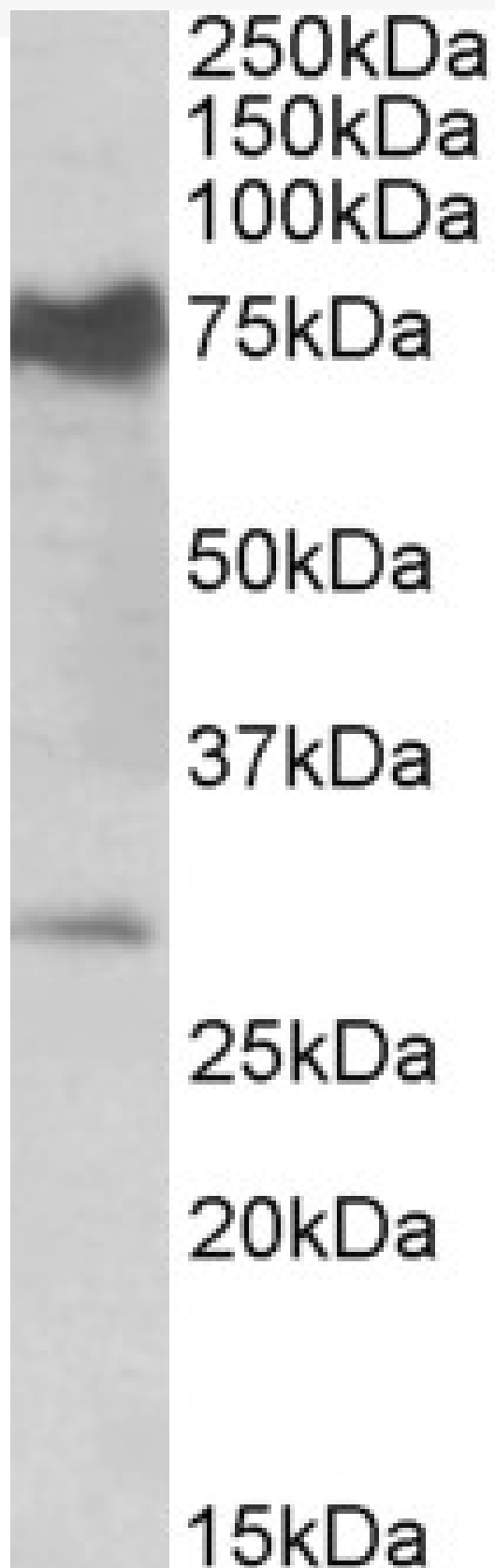


GOAT ANTI-NMNAT3 (MOUSE) ANTIBODY

SKU: EB11024



SPECIFICATIONS

Formulation	Supplied at 0.5 mg/ml in Tris saline, 0.02% sodium azide, pH7.3 with 0.5% bovine serum albumin.
Unit Size	100 µg
Storage Instructions	Aliquot and store at -20°C. Minimize freezing and thawing.
Synonym / Alias Names	Nmnat3 PNAT3 OTTMUSP00000025891 OTTMUSP00000025890 NMN adenylyltransferase 3 nicotinate-nucleotide adenylyltransferase 1 nicotinamide nucleotide adenylyltransferase 3 nicotinamide mononucleotide adenylyltransferase 3 naMN adenylyltransferase 1 MGC102340 4933408N02Rik nicotinate-nucleotide adenylyltransferase 1 nicotinamide mononucleotide adenylyltransferase 3 naMN adenylyltransferase 1 OTTMUSP00000025891 OTTMUSP00000025890 NMN adenylyltransferase 3 PNAT3 MGC102340 4933408N02Rik nicotinamide nucleotide adenylyltransferase 3 Nmnat3
Accession ID	NP_653116.1
Blocking Peptide	EBP11024
Immunogen	Peptide with sequence C-KALGQGQSVKYLLPE, from the internal region of the protein sequence according to NP_653116.1.
Product Comments	This antibody is expected to recognize both reported isoforms (NP_835471.1; NP_001186976.1).
Peptide Sequence	C-KALGQGQSVKYLLPE
Purification Method	Purified from goat serum by ammonium sulphate precipitation followed by antigen affinity chromatography using the immunizing peptide.
Shipping Instructions	Refrigerated
Predicted Species	Mouse
Reactive Species	Mouse
Mouse Gene ID	74080
Product Grade	https://prod-vector-labs-pimcore-assets.s3.us-east-1.amazonaws.com/assets/products/image/elite_medium.png
ELISA Detection Limit	Antibody detection limit dilution 1:64000.
Western Blot	Approx 28kDa band observed in Mouse Heart lysates (calculated MW of 27.7kDa according to NP_653116.1). Recommended concentration: 0.5-2µg/ml. An additional strong band of unknown identity was also consistently observed at 75kDa. This band was successfully blocked by incubation with the immunizing peptide. We would appreciate any feedback from people in the field - have any such results been reported with other antibodies/lysates? Have any further splice variants/modified forms been reported?
Application Type	Pep-ELISA, WB

DOCUMENTS

- [Data Sheet](#)

GALLERY IMAGES



