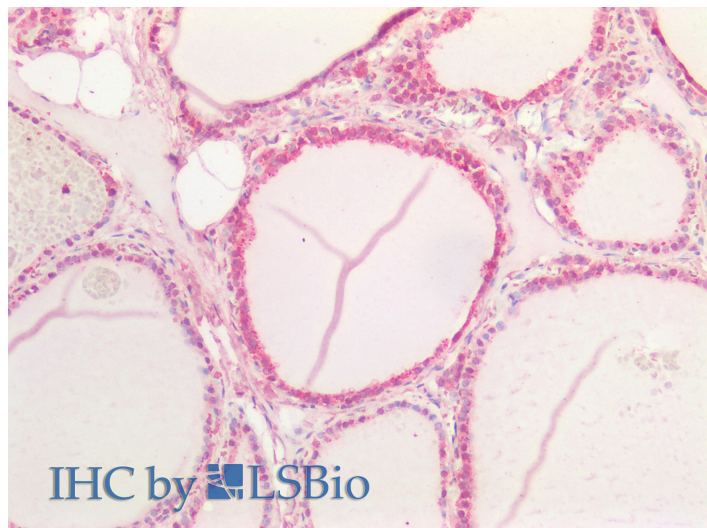


GOAT ANTI-NOTCH1 (AA171-182) ANTIBODY

SKU: EB10784



SPECIFICATIONS

Formulation Supplied at 0.5 mg/ml in Tris saline, 0.02% sodium azide, pH7.3 with 0.5% bovine serum albumin.

Unit Size 100 µg

Storage Instructions Aliquot and store at -20°C. Minimize freezing and thawing.

Synonym / Alias Names translocation-associated notch protein TAN-1| neurogenic locus notch homolog protein 1| Notch homolog 1, translocation-associated| hN1| TAN1| notch 1|NOTCH1

Usage Summary Immunofluorescence: Strong expression of the protein seen in the nucleus of U2OS cells. Recommended concentration: 5µg/ml.

Accession ID NP_060087.3

Blocking Peptide EBP10784

Immunogen Peptide with sequence HGPTCRQDVNEC, from the N Terminus (near) of the protein sequence according to NP_060087.3.

Peptide Sequence HGPTCRQDVNEC

Purification Method Purified from goat serum by ammonium sulphate precipitation followed by antigen affinity chromatography using the immunizing peptide.

Shipping Instructions	Refrigerated
Predicted Species	Human, Mouse, Rat, Dog, Cow
Reactive Species	Human
Human Gene ID	4851
Mouse Gene ID	18128
Rat Gene ID	25496
Product Grade	https://prod-vector-labs-pimcore-assets.s3.us-east-1.amazonaws.com/assets/products/image/elite_medium.png
IHC Results	Paraffin embedded Human Thyroid. Recommended concentration: 5µg/ml.
ELISA	
Detection Limit	Antibody detection limit dilution 1:8000.
Application Type	Pep-ELISA, IF, IHC

DOCUMENTS

- [Data Sheet](#)

GALLERY IMAGES

