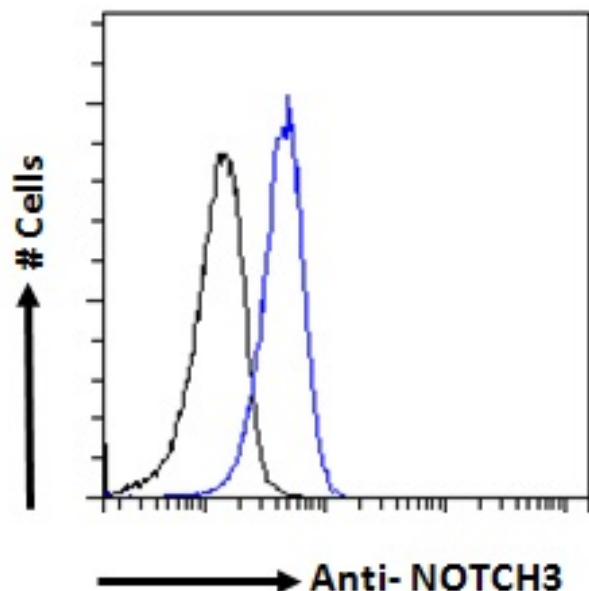


GOAT ANTI-NOTCH3 ANTIBODY

SKU: EB07031



SPECIFICATIONS

Formulation	Supplied at 0.5 mg/ml in Tris saline, 0.02% sodium azide, pH7.3 with 0.5% bovine serum albumin.
Unit Size	100 µg
Storage Instructions	Aliquot and store at -20°C. Minimize freezing and thawing.
Synonym / Alias	Notch homolog 3 Notch (Drosophila) homolog 3 CASIL CADASIL HGNC:7883 Notch homolog 3 (Drosophila) NOTCH3
Names	
Usage	<p>Flow Cytometry: Flow cytometric analysis of HeLa cells. Recommended concentration:
Summary	10ug/ml.</p>
Accession ID	NP_000426.2
Blocking Peptide	EBP07031
Immunogen	Peptide with sequence C-QLGPQPEVTPKRQ, from the C Terminus of the protein sequence according to NP_000426.2.
Peptide Sequence	C-QLGPQPEVTPKRQ
Purification Method	Purified from goat serum by ammonium sulphate precipitation followed by antigen affinity chromatography using the immunizing peptide.

Shipping Instructions	Refrigerated
Predicted Species	Human, Mouse, Rat
Reactive Species	Human
Human Gene ID	4854
Product Grade	https://prod-vector-labs-pimcore-assets.s3.us-east-1.amazonaws.com/assets/products/image/elite_plus_medium.png
IHC Results	In paraffin embedded Human Hippocampus shows select nuclear staining and weaker staining in different compartments of the neuronal cell bodies. Recommended concentration: 4-6µg/ml. Paraffin embedded Human Placenta. Recommended concentration: 5µg/ml.
ELISA	
Detection Limit	Antibody detection limit dilution 1:16000.
Application Type	Pep-ELISA, FC, IHC

DOCUMENTS

- [Data Sheet](#)

GALLERY IMAGES

