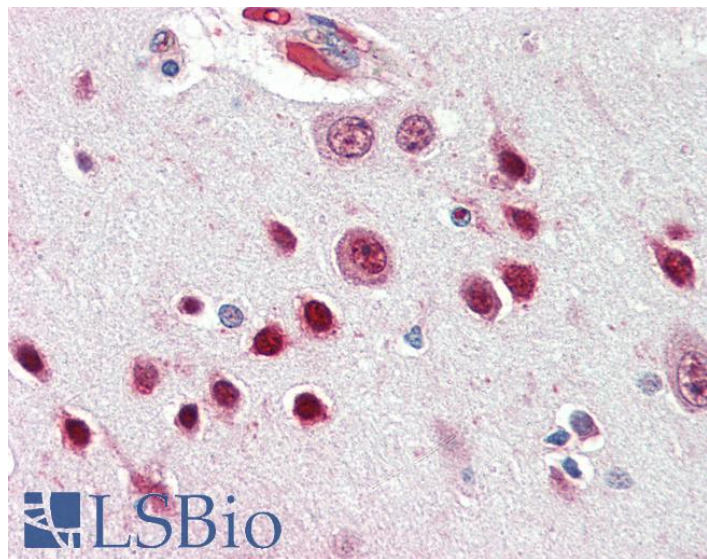


GOAT ANTI-NOVA1 ANTIBODY

SKU: EB08387



SPECIFICATIONS

Formulation	Supplied at 0.5 mg/ml in Tris saline, 0.02% sodium azide, pH7.3 with 0.5% bovine serum albumin.
Unit Size	100 µg
Storage Instructions	Aliquot and store at -20°C. Minimize freezing and thawing.
Synonym / Alias Names	ventral neuron-specific protein 1 paraneoplastic Ri antigen Nova-1 neuro-oncological ventral antigen 1 NOVA1
Usage Summary	Immunofluorescence: Strong expression of the protein seen in the nuclei of U2OS cells. Recommended concentration: 10µg/ml. Flow Cytometry: Flow cytometric analysis of U2OS cells. Recommended concentration: 10ug/ml.
Accession ID	NP_002506.2 ; NP_006480.2 ; NP_006482.1; NP_001353321.1; NP_001353322.1; NP_001353323.1
Blocking Peptide	EBP08387
Immunogen	Peptide with sequence C-REMPQNVAKTEPVS, from the internal region of the protein sequence according to NP_002506.2 ; NP_006480.2 ; NP_006482.1; NP_001353321.1; NP_001353322.1; NP_001353323.1.
Product Comments	This antibody is expected to recognise all reported isoforms listed.
Peptide Sequence	C-REMPQNVAKTEPVS

Purification Method	Purified from goat serum by ammonium sulphate precipitation followed by antigen affinity chromatography using the immunizing peptide.
Shipping Instructions	Refrigerated
Predicted Species	Human, Mouse, Rat, Cow
Reactive Species	Human
Human Gene ID	4857
Product Grade	https://prod-vector-labs-pimcore-assets.s3.us-east-1.amazonaws.com/assets/products/image/elite_plus_medium.png
IHC Results	Paraffin embedded Human Brain (Cortex) and Heart. Recommended concentration: 5µg/ml.
ELISA Detection Limit	Antibody detection limit dilution 1:64000.
Western Blot	Approx. 50-55kDa band observed in Human Breast Cancer lysates, and in preliminary testing of Human Kidney lysate (calculated MW of 51.7kDa according to NP_002506.2). Recommended concentration: 0.01-0.03µg/ml. Primary incubation 1 hour at room temperature.
Application Type	Pep-ELISA, WB, IHC, IF, FC

DOCUMENTS

- [Data Sheet](#)

GALLERY IMAGES

