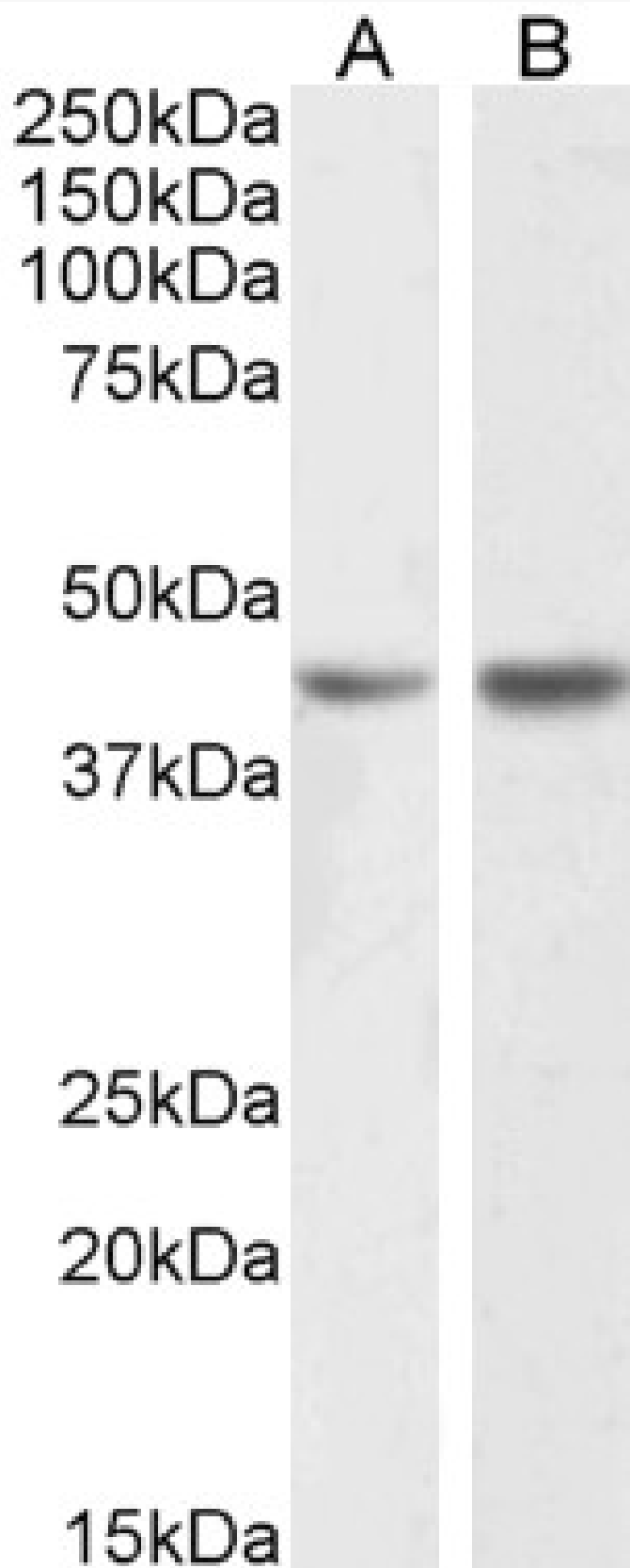


# GOAT ANTI-NPHS2 / SRN1 ANTIBODY

**SKU:** EB12149



## SPECIFICATIONS

<b>Formulation</b>	Supplied at 0.5 mg/ml in Tris saline, 0.02% sodium azide, pH7.3 with 0.5% bovine serum albumin.
<b>Unit Size</b>	100 µg
<b>Storage Instructions</b>	Aliquot and store at -20°C. Minimize freezing and thawing.
<b>Synonym / Alias Names</b>	podocin SRN1 PDCN nephrosis 2, idiopathic, steroid-resistant (podocin) NPHS2
<b>Accession ID</b>	NP_055440.1
<b>Blocking Peptide</b>	EBP12149
<b>Immunogen</b>	Peptide with sequence C-SPSKPVEPLNPKK, from the C Terminus of the protein sequence according to NP_055440.1.
<b>Peptide Sequence</b>	C-SPSKPVEPLNPKK
<b>Purification Method</b>	Purified from goat serum by ammonium sulphate precipitation followed by antigen affinity chromatography using the immunizing peptide.
<b>Shipping Instructions</b>	Refrigerated
<b>Predicted Species</b>	Human, Mouse, Pig, Cow
<b>Reactive Species</b>	Human, Mouse
<b>Human Gene ID</b>	7827
<b>Product Grade</b>	<a href="https://prod-vector-labs-pimcore-assets.s3.us-east-1.amazonaws.com/assets/products/image/elite_medium.png">https://prod-vector-labs-pimcore-assets.s3.us-east-1.amazonaws.com/assets/products/image/elite_medium.png</a>
<b>ELISA Detection Limit</b>	Antibody detection limit dilution 1:64000.
<b>Western Blot</b>	Approx 42-45kDa band observed in Human and Mouse Kidney lysates (calculated MW of 42.2kDa according to Human NP_055440.1 and Mouse NP_569723.1). Recommended concentration: 0.5-2µg/ml. Primary incubation 1 hour at room temperature.
<b>Application Type</b>	Pep-ELISA, WB

## SELECTED REFERENCES

[{"pmid": 34440683, "intro": "**This antibody (previous batch) has been successfully used in IF on Mouse:**", "title": "Novel Human Podocyte Cell Model Carrying G2/G2 APOL1 High-Risk"}]

Genotype", "author": "Pepe M. Ekulu et al.", "journal": "Cells. 2021 Aug; 10(8): 1914."}]

## DOCUMENTS

- [Data Sheet](#)

## GALLERY IMAGES

