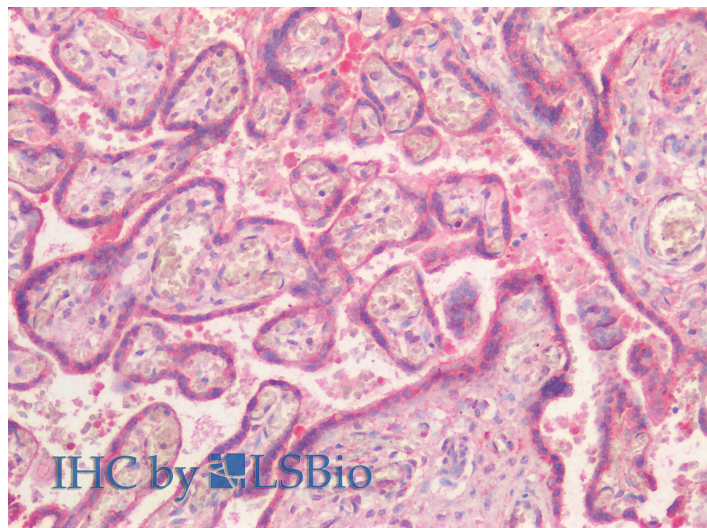


GOAT ANTI-NR5A2 / LRH1 (AA328-338) ANTIBODY

SKU: EB12284



SPECIFICATIONS

Formulation Supplied at 0.5 mg/ml in Tris saline, 0.02% sodium azide, pH7.3 with 0.5% bovine serum albumin.

Unit Size 100 µg

Storage Instructions Aliquot and store at -20°C. Minimize freezing and thawing.

Synonym / Alias Names nuclear receptor subfamily 5 group A member 2|nuclear receptor NR5A2|liver receptor homolog-1|liver receptor homolog 1|liver nuclear receptor homolog-1 variant 2|hepatocytic transcription factor|fetoprotein-alpha 1 (AFP) transcription factor|b1-binding factor, hepatocyte transcription factor which activates enhancer II of hepatitis B virus|alpha-1-fetoprotein transcription factor|CYP7A promoter-binding factor|hB1F-2|LRH1|LRH-1|FTZ-F1beta|FTZ-F1|FTF|CPF|B1F2|B1F|nuclear receptor subfamily 5, group A, member 2|NR5A2

Accession ID NP_995582.1; NP_003813.1

Blocking Peptide EBP12284

Immunogen Peptide with sequence C-QEQANRSKHEK, from the internal region of the protein sequence according to NP_995582.1; NP_003813.1.

Product Comments This antibody is expected to recognize both reported isoforms (NP_995582.1; NP_003813.1).

Peptide Sequence C-QEQANRSKHEK

Purification Method	Purified from goat serum by ammonium sulphate precipitation followed by antigen affinity chromatography using the immunizing peptide.
Shipping Instructions	Refrigerated
Predicted Species	Human
Reactive Species	Human
Human Gene ID	2494
Product Grade	https://prod-vector-labs-pimcore-assets.s3.us-east-1.amazonaws.com/assets/products/image/elite_medium.png
IHC Results	Paraffin embedded Human Placenta. Recommended concentration: 5µg/ml.
ELISA Detection Limit	Antibody detection limit dilution 1:128000.
Western Blot	Approx 55kDa band observed in lysates of cell line HepG2 (calculated MW of 56.5kDa according to NP_003813.1). Recommended concentration: 1-3µg/ml. Primary incubation was 1 hour.
Application Type	Pep-ELISA, WB, IHC

DOCUMENTS

- [Data Sheet](#)

GALLERY IMAGES

