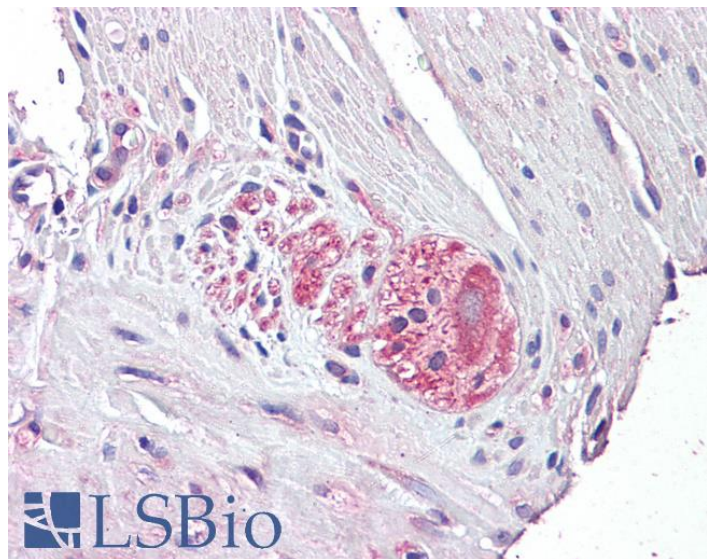


# GOAT ANTI-NTN4 (AA 65-76) ANTIBODY

**SKU:** EB10249



## SPECIFICATIONS

**Formulation** Supplied at 0.5 mg/ml in Tris saline, 0.02% sodium azide, pH7.3 with 0.5% bovine serum albumin.

**Unit Size** 100 µg

**Storage Instructions** Aliquot and store at -20°C. Minimize freezing and thawing.

**Synonym /**

**Alias** NTN4|PRO3091|Netrin-4|netrin 4|FLJ23180|beta-netrin

**Names**

**Accession ID** NP\_067052.2

**Blocking Peptide** EBP10249

**Immunogen** Peptide with sequence SENTDLTCRQPK, from the internal region of the protein sequence according to NP\_067052.2.

**Peptide Sequence** SENTDLTCRQPK

**Purification Method** Purified from goat serum by ammonium sulphate precipitation followed by antigen affinity chromatography using the immunizing peptide.

**Shipping Instructions** Refrigerated

<b>Predicted Species</b>	Human, Mouse, Dog, Cow
<b>Reactive Species</b>	Human
<b>Human Gene ID</b>	59277
<b>Mouse Gene ID</b>	57764
<b>Product Grade</b>	<a href="https://prod-vector-labs-pimcore-assets.s3.us-east-1.amazonaws.com/assets/products/image/elite_medium.png">https://prod-vector-labs-pimcore-assets.s3.us-east-1.amazonaws.com/assets/products/image/elite_medium.png</a>
<b>IHC Results</b>	Paraffin embedded Human Small Intestine. Recommended concentration: 3.75µg/ml.
<b>ELISA</b>	
<b>Detection Limit</b>	Antibody detection limit dilution 1:32000.
<b>Western Blot</b>	Preliminary experiments in Human Heart, Kidney, Prostate and Pancreas lysates gave no specific signal but low background (at antibody concentration up to 1µg/ml).
<b>Application Type</b>	Pep-ELISA, IHC

## DOCUMENTS

- [Data Sheet](#)

## GALLERY IMAGES

