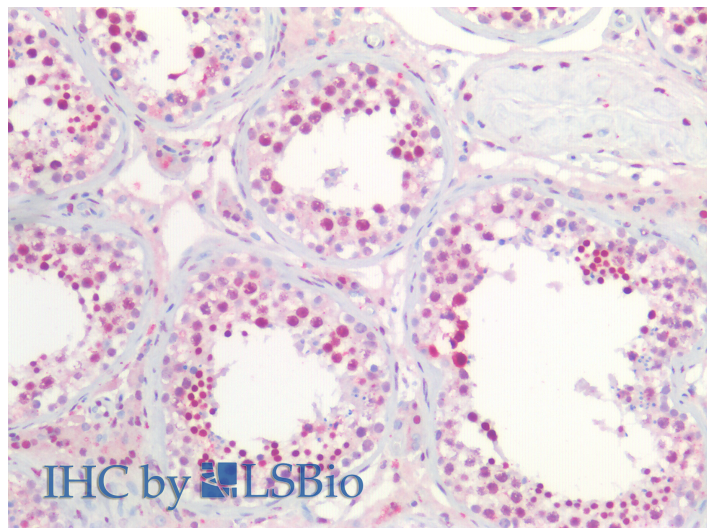


GOAT ANTI-NUCLEOPHOSMIN / NPM1 ANTIBODY

SKU: EB06684



SPECIFICATIONS

| | |
|------------------------------|--|
| Formulation | Supplied at 0.5 mg/ml in Tris saline, 0.02% sodium azide, pH7.3 with 0.5% bovine serum albumin. |
| Unit Size | 100 µg |
| Storage Instructions | Aliquot and store at -20°C. Minimize freezing and thawing. |
| Synonym / Alias Names | nucleophosmin 1 MGC104254 nucleophosmin/nucleoplasmin family, member 1 nucleolar phosphoprotein B23 numatrin nucleophosmin (nucleolar phosphoprotein B23, numatrin) B23 NPM NPM1 |
| Usage Summary | Immunofluorescence: Strong expression of the protein seen in the nucleoli of HeLa cells. Recommended concentration: 10µg/ml. |
| Accession ID | NP_001341935.1; NP_954654.1; NP_001341936.1; NP_001341939.1 |
| Blocking Peptide | EBP06684 |
| Immunogen | Peptide with sequence C-QEAIQDLWQWRKSL, from the C Terminus of the protein sequence according to NP_001341935.1; NP_954654.1; NP_001341936.1; NP_001341939.1. |
| Peptide Sequence | C-QEAIQDLWQWRKSL |
| Purification Method | Purified from goat serum by ammonium sulphate precipitation followed by antigen affinity chromatography using the immunizing peptide. |
| Shipping Instructions | Refrigerated |

| | |
|--------------------------|---|
| Predicted Species | Human, Mouse, Rat, Dog, Cow |
| Reactive Species | Human, Mouse |
| Human Gene ID | 4869 |
| Product Grade | https://prod-vector-labs-pimcore-assets.s3.us-east-1.amazonaws.com/assets/products/image/elite_plus_medium.png |
| IHC Results | Paraffin embedded Human Testis. Recommended concentration: 5µg/ml. |
| ELISA | |
| Detection Limit | Antibody detection limit dilution 1:8000. |
| Western Blot | Approx 37kDa band observed in lysates of cell lines Daudi, Jurkat, K562 and NIH3T3 and in Mouse Spleen lysates (calculated MW of 32.6kDa according to Human NP_001341935.1 and Mouse NP_032748.1). This molecular weight is routinely observed by other sources. Recommended concentration: 0.01-1µg/ml. Primary incubation 1 hour at room temperature. |
| Application Type | Pep-ELISA, WB, IF, IHC |

DOCUMENTS

- [Data Sheet](#)

GALLERY IMAGES

