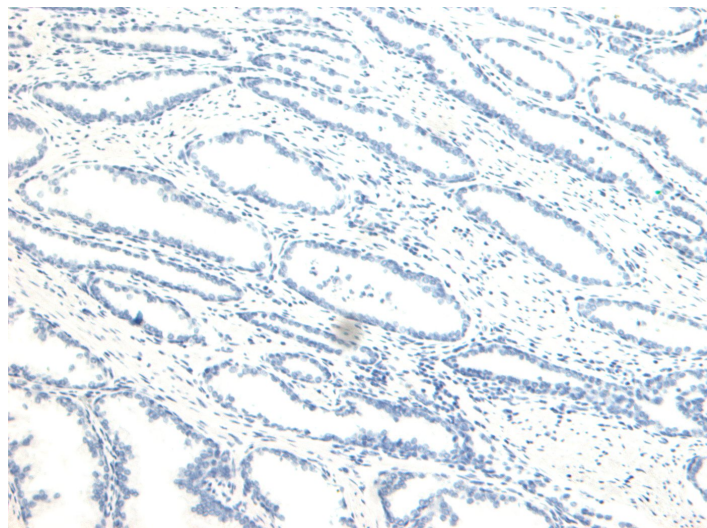


GOAT ANTI-NUMB ANTIBODY

SKU: EB05296



SPECIFICATIONS

Formulation	Supplied at 0.5 mg/ml in Tris saline, 0.02% sodium azide, pH7.3 with 0.5% bovine serum albumin.
Unit Size	100 µg
Storage Instructions	Aliquot and store at -20°C. Minimize freezing and thawing.
Synonym / Alias Names	numb homolog[S171 numb homolog (Drosophila) NUMB
Usage Summary	Immunofluorescence: Strong expression of the protein seen in the cell junctions/plasma membrane and cytoplasm of A431 and NIH3T3 cells. Recommended concentration: 10µg/ml. Flow Cytometry: Flow cytometric analysis of A431 cells. Recommended concentration: 10ug/ml.
Accession ID	NP_001005743.1; 001005744.1; NP_003735; NP_001005745.1
Blocking Peptide	EBP05296
Immunogen	Peptide with sequence C-PFSSDLQKTFEIEL, from the C Terminus of the protein sequence according to NP_001005743.1; 001005744.1; NP_003735; NP_001005745.1.
Product Comments	This antibody is expected to recognize all reported isoforms (NP_001005743.1, 001005744.1, NP_003735, NP_001005745.1). It is also likely to cross-react with Numbl (NUMBL, GeneID: 9253) which has a very similar C-Terminus, although this has not yet been tested experimentally.
Peptide Sequence	C-PFSSDLQKTFEIEL

Purification Method	Purified from goat serum by ammonium sulphate precipitation followed by antigen affinity chromatography using the immunizing peptide.
Shipping Instructions	Refrigerated
Predicted Species	Human, Mouse, Dog, Cow
Reactive Species	Human, Mouse
Human Gene ID	8650
Mouse Gene ID	18222
Product Grade	https://prod-vector-labs-pimcore-assets.s3.us-east-1.amazonaws.com/assets/products/image/elite_plus_medium.png
IHC Results	Paraffin embedded Human Prostate. Recommended concentration: 6-8µg/ml.
ELISA	
Detection Limit	Antibody detection limit dilution 1:128000.
Application Type	Pep-ELISA, IHC, IF, FC

DOCUMENTS

- [Data Sheet](#)

GALLERY IMAGES

