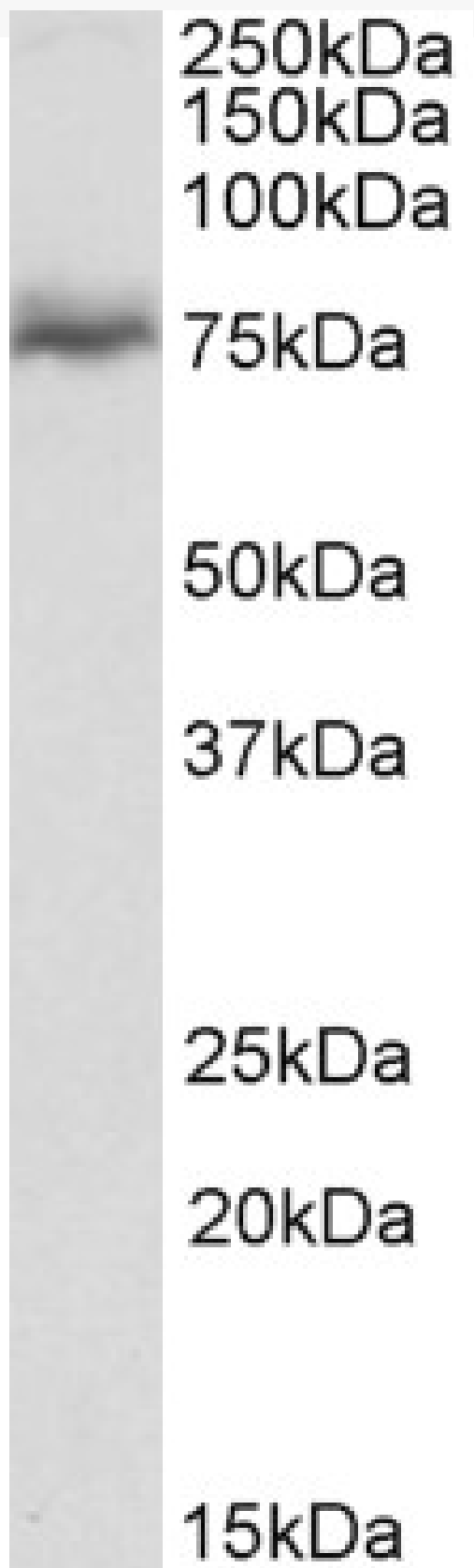


GOAT ANTI-NUMBL ANTIBODY

SKU: EB11530



SPECIFICATIONS

Formulation Supplied at 0.5 mg/ml in Tris saline, 0.02% sodium azide, pH7.3 with 0.5% bovine serum albumin.

Unit Size 100 µg

Storage Instructions Aliquot and store at -20°C. Minimize freezing and thawing.

Synonym / Alias Names TNRC23|numb-related protein|NUMB-R|NUMBR|numb-like protein|NUMBLIKE|NUMBL|numb homolog-like|numb homolog (Drosophila)-like|NBL|CTG3a|CAG3A

Accession ID NP_004747.1

Blocking Peptide EBP11530

Immunogen Peptide with sequence C-PAQPGHVSPTPAT, from the internal region of the protein sequence according to NP_004747.1.

Peptide Sequence C-PAQPGHVSPTPAT

Purification Method Purified from goat serum by ammonium sulphate precipitation followed by antigen affinity chromatography using the immunizing peptide.

Shipping Instructions Refrigerated

Predicted Species Human, Mouse, Rat, Dog, Cow

Reactive Species Mouse

Human Gene ID 9253

Mouse Gene ID 18223

Rat Gene ID 292732

Product Grade https://prod-vector-labs-pimcore-assets.s3.us-east-1.amazonaws.com/assets/products/image/elite_medium.png

IHC Results In paraffin embedded fetal Mouse Brain shows staining of lobes and fibres in the optic disc (first figure) and nervous fibres from the spinal metameric roots (second figure). Recommended concentration, 4-6µg/ml.

ELISA Detection Limit Antibody detection limit dilution 1:16000.

Western Blot Approx 75kDa band observed in Mouse fetal Brain lysates (calculated MW of 64.1kDa according to Mouse NP_035080.2). The observed molecular weight corresponds to earlier findings in literature with different antibodies (Tao et al, Mol Biol Cell. 2012 Jul;23(14):2635-44.PMID: 22593207). Recommended concentration: 0.03-0.1µg/ml.

Application Type Pep-ELISA, WB, IHC

DOCUMENTS

- [Data Sheet](#)

GALLERY IMAGES

