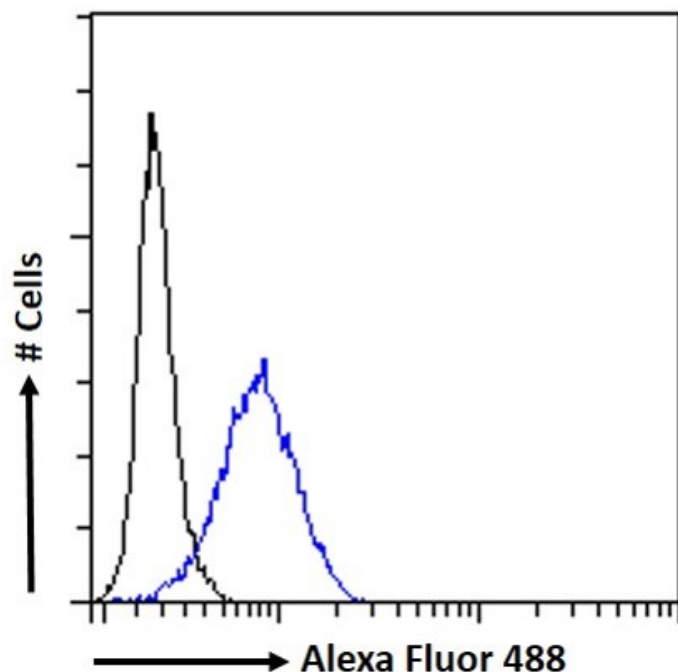


# GOAT ANTI-NUP62 ANTIBODY

SKU: EB06213



## SPECIFICATIONS

**Formulation** Supplied at 0.5 mg/ml in Tris saline, 0.02% sodium azide, pH7.3 with 0.5% bovine serum albumin.

**Unit Size** 100 µg

**Storage Instructions** Aliquot and store at -20°C. Minimize freezing and thawing.

**Synonym / Alias Names** SNDI|IBSN|FLJ43869|nuclear pore glycoprotein p62|nucleoporin 62kDa|DKFZp547L134|FLJ20822|MGC841|p62|NUP62

**Usage Summary** <strong>Flow Cytometry:</strong> Flow cytometric analysis of K562 cells. Recommended concentration: 10ug/ml.

**Accession ID** NP\_036478.2; NP\_057637.2; NP\_714940.1; NP\_714941.1

**Blocking Peptide** EBP06213

**Immunogen** Peptide with sequence C-RKEQERSFRITFD, from the C Terminus of the protein sequence according to NP\_036478.2; NP\_057637.2; NP\_714940.1; NP\_714941.1.

<b>Product Comments</b>	All four variants represent identical protein.
<b>Peptide Sequence</b>	C-RKEQERSFRITFD
<b>Purification Method</b>	Purified from goat serum by ammonium sulphate precipitation followed by antigen affinity chromatography using the immunizing peptide.
<b>Shipping Instructions</b>	Refrigerated
<b>Predicted Species</b>	Human, Dog, Cow
<b>Reactive Species</b>	Human
<b>Human Gene ID</b>	23636
<b>Product Grade</b>	<a href="https://prod-vector-labs-pimcore-assets.s3.us-east-1.amazonaws.com/assets/products/image/elite_medium.png">https://prod-vector-labs-pimcore-assets.s3.us-east-1.amazonaws.com/assets/products/image/elite_medium.png</a>
<b>ELISA Detection Limit</b>	Antibody detection limit dilution 1:128000.
<b>Western Blot</b>	Approx. 70kDa band observed in nuclear lysates of cell lines Jurkat, K562, A431 and HepG2 (calculated MW of 53.3kDa according to NP_036478.2). This molecular weight is routinely observed by other sources. Recommended concentration: 0.1-1µg/ml. Primary incubation 1 hour at room temperature.
<b>Application Type</b>	Pep-ELISA, WB, FC

## DOCUMENTS

- [Data Sheet](#)

## GALLERY IMAGES

