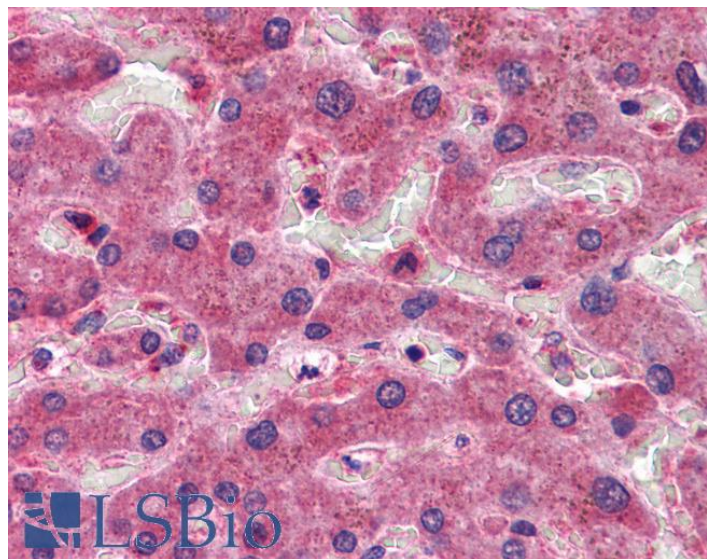


GOAT ANTI-OASIS / CREB3L1 ANTIBODY

SKU: EB06914



SPECIFICATIONS

Formulation Supplied at 0.5 mg/ml in Tris saline, 0.02% sodium azide, pH7.3 with 0.5% bovine serum albumin.

Unit Size 100 µg

Storage Instructions Aliquot and store at -20°C. Minimize freezing and thawing.

Synonym / Alias Names BBF-2 homolog|old astrocyte specifically induced substance|BBF-2 (drosophila) homolog|cAMP responsive element binding protein 3-like 1|OASIS|CREB3L1

Accession ID NP_443086.1

Blocking Peptide EBP06914

Immunogen Peptide with sequence C-DFSHSKEWFHDRD, from the C Terminus of the protein sequence according to NP_443086.1.

Peptide Sequence C-DFSHSKEWFHDRD

Purification Method Purified from goat serum by ammonium sulphate precipitation followed by antigen affinity chromatography using the immunizing peptide.

Shipping Instructions Refrigerated

Predicted Species	Human, Mouse, Rat
Reactive Species	Human
Product Grade	https://prod-vector-labs-pimcore-assets.s3.us-east-1.amazonaws.com/assets/products/image/elite_medium.png
IHC Results	Paraffin embedded Human Skeletal Muscle and Liver. Recommended concentration: 3.75µg/ml.
ELISA	
Detection Limit	Antibody detection limit dilution 1:32000.
Western Blot	Approx 60kDa band observed in lysates of cell line A549 (calculated MW of 57.0kDa according to NP_443086.1). Recommended concentration: 1-3µg/ml.
Application Type	Pep-ELISA, WB, IHC

DOCUMENTS

- [Data Sheet](#)

GALLERY IMAGES

