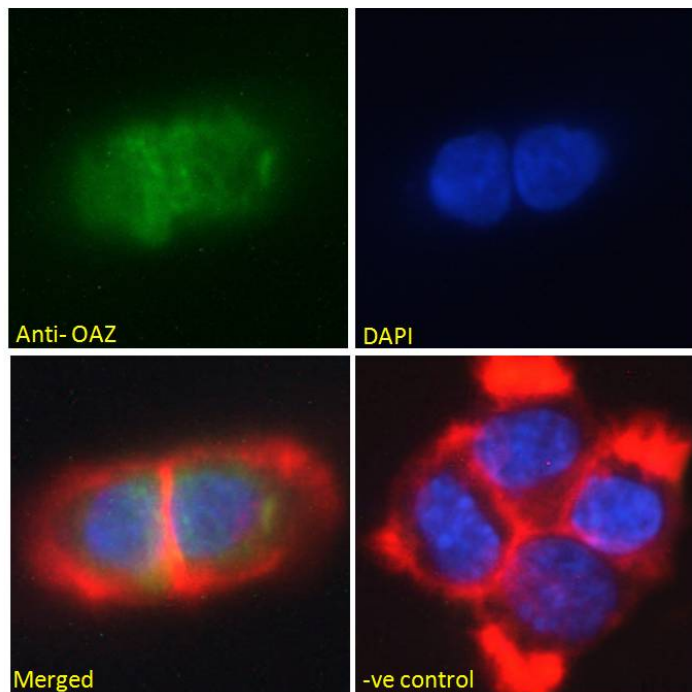


## GOAT ANTI-OAZ ANTIBODY

SKU: EB08497



## SPECIFICATIONS

**Formulation** Supplied at 0.5 mg/ml in Tris saline, 0.02% sodium azide, pH7.3 with 0.5% bovine serum albumin.

**Unit Size** 100 µg

**Storage Instructions** Aliquot and store at -20°C. Minimize freezing and thawing.

**Synonym / Alias Names** ZNF423|zinc finger protein 423|Ebfaz|KIAA0760|MGC138520|MGC138522|OAZ|Roaz|ZFP423|Zfp104|OLF-1/EBF associated zinc finger|Smad- and Olf-interacting zinc finger protein|early B-cell factor associated zinc finger protein

**Usage Summary** **Immunofluorescence:** Strong expression of the protein seen in the nuclei of A431 cells. Recommended concentration: 10µg/ml. **Flow Cytometry:** Flow cytometric analysis of Kelly cells. Recommended concentration: 10ug/ml.

**Accession ID** NP\_055884.2

**Blocking Peptide** EBP08497

<b>Immunogen</b>	Peptide with sequence EPECDQKTSRALEDK, from the N Terminus (near) of the protein sequence according to NP_055884.2.
<b>Peptide Sequence</b>	EPECDQKTSRALEDK
<b>Purification Method</b>	Purified from goat serum by ammonium sulphate precipitation followed by antigen affinity chromatography using the immunizing peptide.
<b>Shipping Instructions</b>	Refrigerated
<b>Predicted Species</b>	Human, Mouse
<b>Reactive Species</b>	Human
<b>Human Gene ID</b>	23090
<b>Mouse Gene ID</b>	94187
<b>Product Grade</b>	<a href="https://prod-vector-labs-pimcore-assets.s3.us-east-1.amazonaws.com/assets/products/image/elite_medium.png">https://prod-vector-labs-pimcore-assets.s3.us-east-1.amazonaws.com/assets/products/image/elite_medium.png</a>
<b>ELISA Detection Limit</b>	Antibody detection limit dilution 1:2000.
<b>Application Type</b>	Pep-ELISA, IF, FC

## DOCUMENTS

- [Data Sheet](#)

## GALLERY IMAGES

