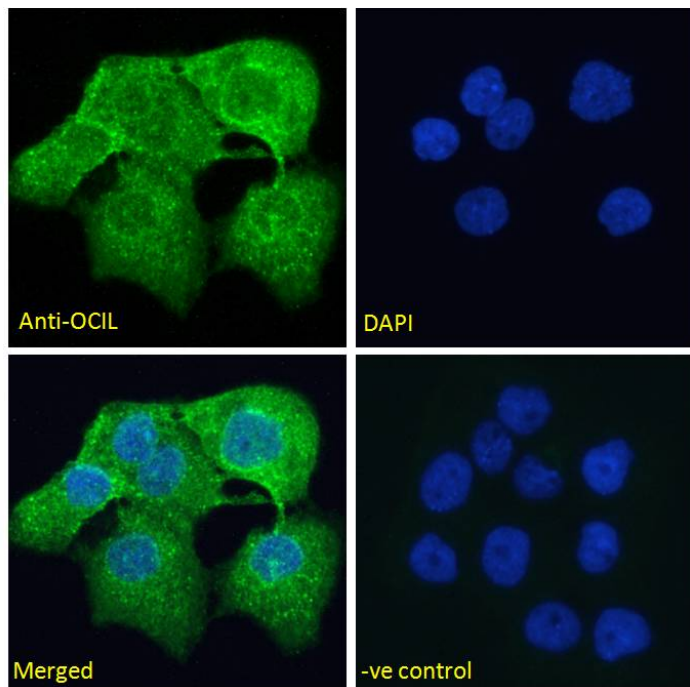


GOAT ANTI-OCIL ANTIBODY

SKU: EB09341



SPECIFICATIONS

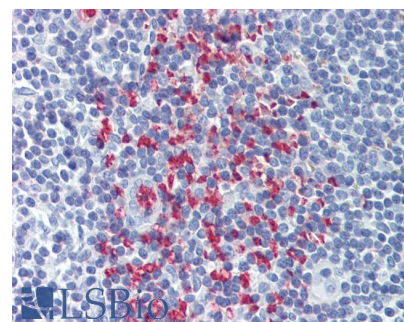
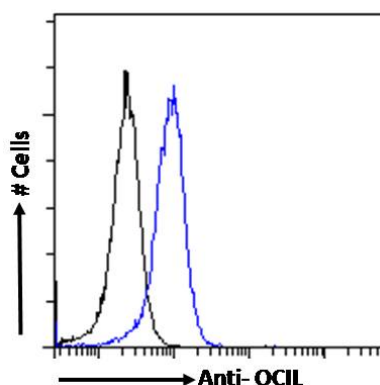
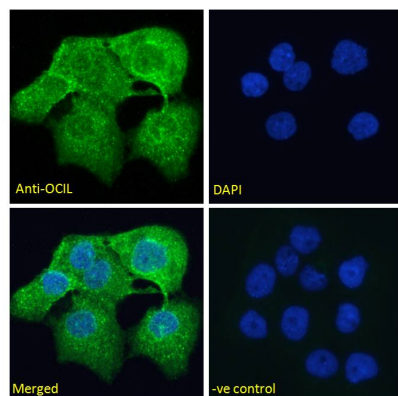
Formulation	Supplied at 0.5 mg/ml in Tris saline, 0.02% sodium azide, pH7.3 with 0.5% bovine serum albumin.
Unit Size	100 µg
Storage	
Instructions	Aliquot and store at -20°C. Minimize freezing and thawing.
Synonym / Alias Names	osteoclast inhibitory lectin lectin-like transcript 1 lectin-like NK cell receptor C-type lectin superfamily 2, member D C-type lectin related f OCIL LLT1 CLAX C-type lectin domain family 2, member D CLEC2D
Usage Summary	<p>Immunofluorescence: Strong expression of the protein seen in the cytoplasm of A431 cells.</p> <p>Recommended concentration: 10µg/ml.</p> <p>Flow Cytometry: Flow cytometric analysis of Jurkat cells. Recommended concentration: 10ug/ml.</p>
Accession ID	NP_037401.1; NP_001004419.1; NP_001184246.1
Blocking Peptide	EBP09341
Immunogen	Peptide with sequence C-LLRYKGPSDH, from the Internal region of the protein sequence according to NP_037401.1; NP_001004419.1; NP_001184246.1.

Product Comments	This antibody is expected to recognize all isoforms (NP_037401.1; NP_001004419.1; NP_001184246.1).
Peptide Sequence	C-LLRYKGPSDH
Purification Method	Purified from goat serum by ammonium sulphate precipitation followed by antigen affinity chromatography using the immunizing peptide.
Shipping Instructions	Refrigerated
Predicted Species	Human, Dog, Cow
Reactive Species	Human
Human Gene ID	29121
Product Grade	https://prod-vector-labs-pimcore-assets.s3.us-east-1.amazonaws.com/assets/products/image/elite_plus_medium.png
IHC Results	Paraffin embedded Human Tonsil and Placenta. Recommended concentration: 3.75µg/ml.
ELISA Detection Limit	Antibody detection limit dilution 1:16000.
Western Blot	Approx 30-35kDa band observed in lysates of histiocytic lymphoma cell line U937 (calculated MW of 22.3kDa according to NP_001004419.1). This molecular weight is routinely observed by other sources. Recommended concentration: 0.3-1µg/ml. Primary incubation 1 hour at room temperature.
Application Type	Pep-ELISA, WB, IF, FC, IHC

DOCUMENTS

- [Data Sheet](#)

GALLERY IMAGES



250kDa

150kDa

100kDa

75kDa

50kDa

37kDa

25kDa

20kDa

15kDa

