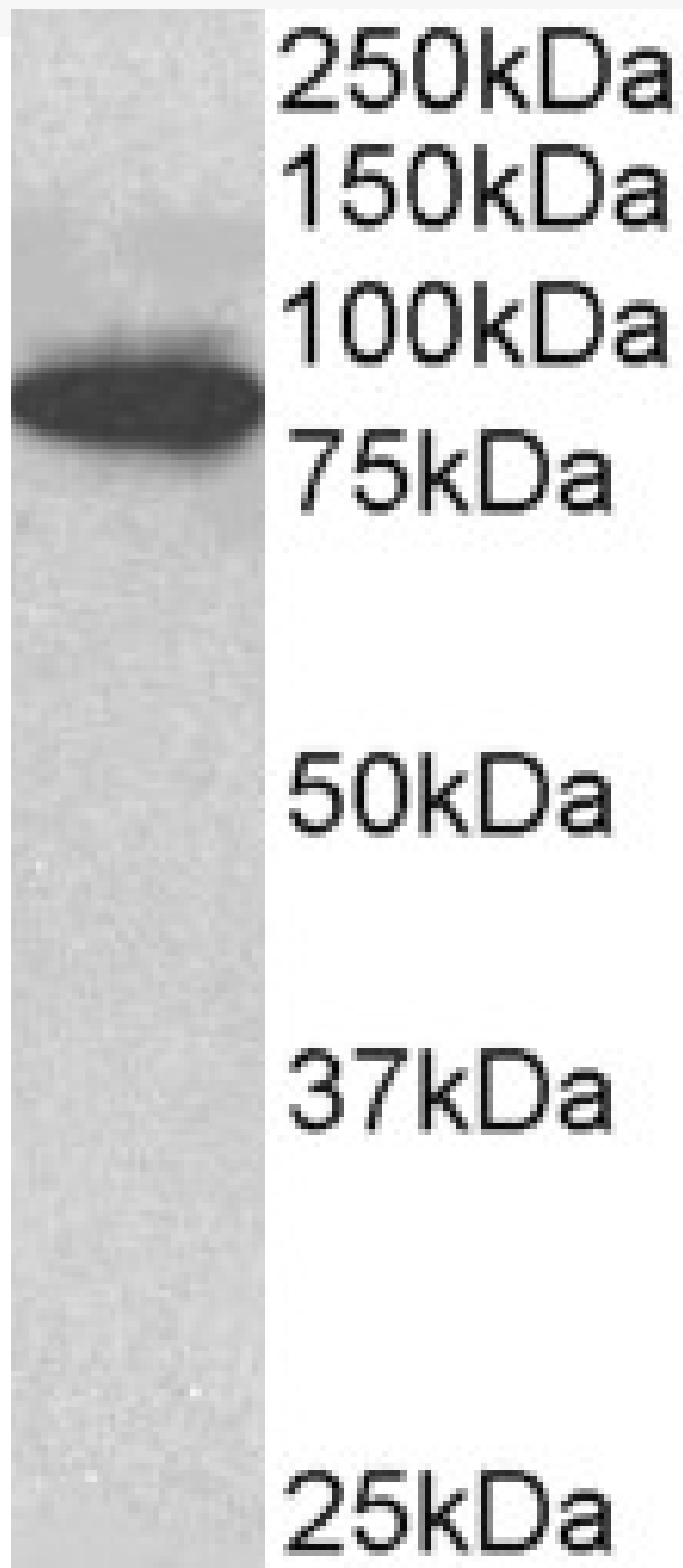


GOAT ANTI-ODF2 ANTIBODY

SKU: EB10610



SPECIFICATIONS

Formulation	Supplied at 0.5 mg/ml in Tris saline, 0.02% sodium azide, pH7.3 with 0.5% bovine serum albumin.
Unit Size	100 µg
Storage Instructions	Aliquot and store at -20°C. Minimize freezing and thawing.
Synonym / Alias Names	sperm tail structural protein outer dense fibre of sperm tails 2 outer dense fiber protein 2 outer dense fiber of sperm tails, 84-kD outer dense fiber of sperm tails protein 2 cenexin 1 cancer/testis antigen 134 ODF84 ODF2/2 ODF2/1 MGC9034 MGC111096 FLJ44866 CT134 outer dense fiber of sperm tails 2 ODF2
Accession ID	NP_002531.3; NP_702915.1
Blocking Peptide	EBP10610
Immunogen	Peptide with sequence C-REKHQASQKENKQ, from the internal region of the protein sequence according to NP_002531.3; NP_702915.1.
Product Comments	This antibody is expected to recognize reported isoform 1 (NP_002531.3).
Peptide Sequence	C-REKHQASQKENKQ
Purification Method	Purified from goat serum by ammonium sulphate precipitation followed by antigen affinity chromatography using the immunizing peptide.
Shipping Instructions	Refrigerated
Predicted Species	Human, Mouse, Rat, Dog, Pig
Reactive Species	Mouse
Human Gene ID	4957
Mouse Gene ID	18286
Rat Gene ID	29479
Product Grade	https://prod-vector-labs-pimcore-assets.s3.us-east-1.amazonaws.com/assets/products/image/elite_medium.png
ELISA Detection Limit	Antibody detection limit dilution 1:128000.
Western Blot	Approx 85kDa band observed in C57/B6 mouse CTL lysates (calculated MW of 95.4kDa according to Mouse NP_001106684.1). Recommended concentration: 1-3µg/ml.
Application Type	Pep-ELISA, WB

DOCUMENTS

- [Data Sheet](#)

GALLERY IMAGES

