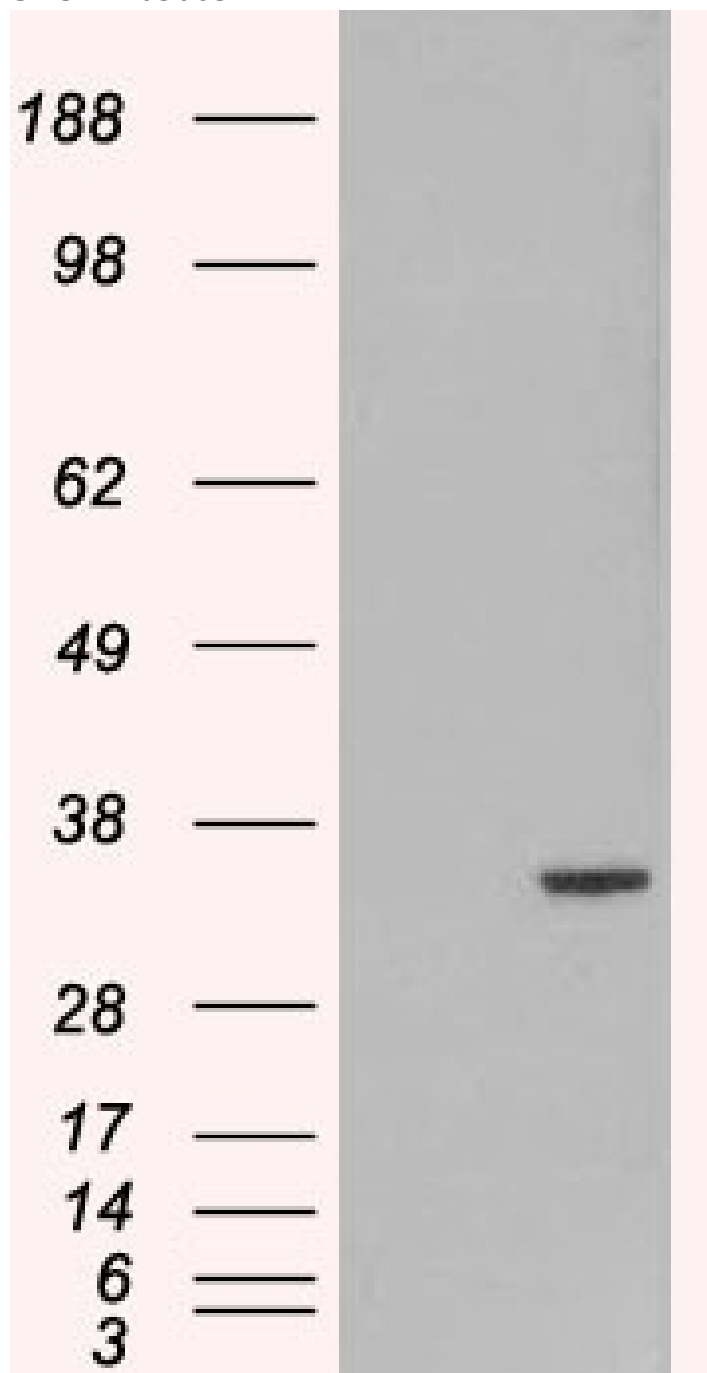


GOAT ANTI-ORC6L ANTIBODY

SKU: EB05063



SPECIFICATIONS

Formulation	Supplied at 0.5 mg/ml in Tris saline, 0.02% sodium azide, pH7.3 with 0.5% bovine serum albumin.
Unit Size	100 µg
Storage	Aliquot and store at -20°C. Minimize freezing and thawing.
Instructions	
Synonym / Alias	origin recognition complex, subunit 6 (yeast homolog)-like origin recognition complex, subunit 6-like (yeast) origin recognition complex subunit 6 ORC6 origin recognition complex, subunit 6 homolog-like (yeast) ORC6L
Names	
Accession ID	NP_055136.1
Blocking Peptide	EBP05063
Immunogen	Peptide with sequence C-ENAASAQKATAE, from the C Terminus of the protein sequence according to NP_055136.1.
Peptide Sequence	C-ENAASAQKATAE
Purification Method	Purified from goat serum by ammonium sulphate precipitation followed by antigen affinity chromatography using the immunizing peptide.
Shipping Instructions	Refrigerated
Predicted Species	Human
Reactive Species	Human
Human Gene ID	23594
Product Grade	https://prod-vector-labs-pimcore-assets.s3.us-east-1.amazonaws.com/assets/products/image/elite_medium.png
Western Blot	In transfected HEK293 transiently expressing ORC6L a band of approx. 33kDa is observed. This band is not observed in the non-transfected HEK293. The calculated molecular size is 28.1kDa according to NP_055136.1. Recommended concentration, 1-3µg/ml.
Application Type	WB-Trf

DOCUMENTS

- [Data Sheet](#)

GALLERY IMAGES

