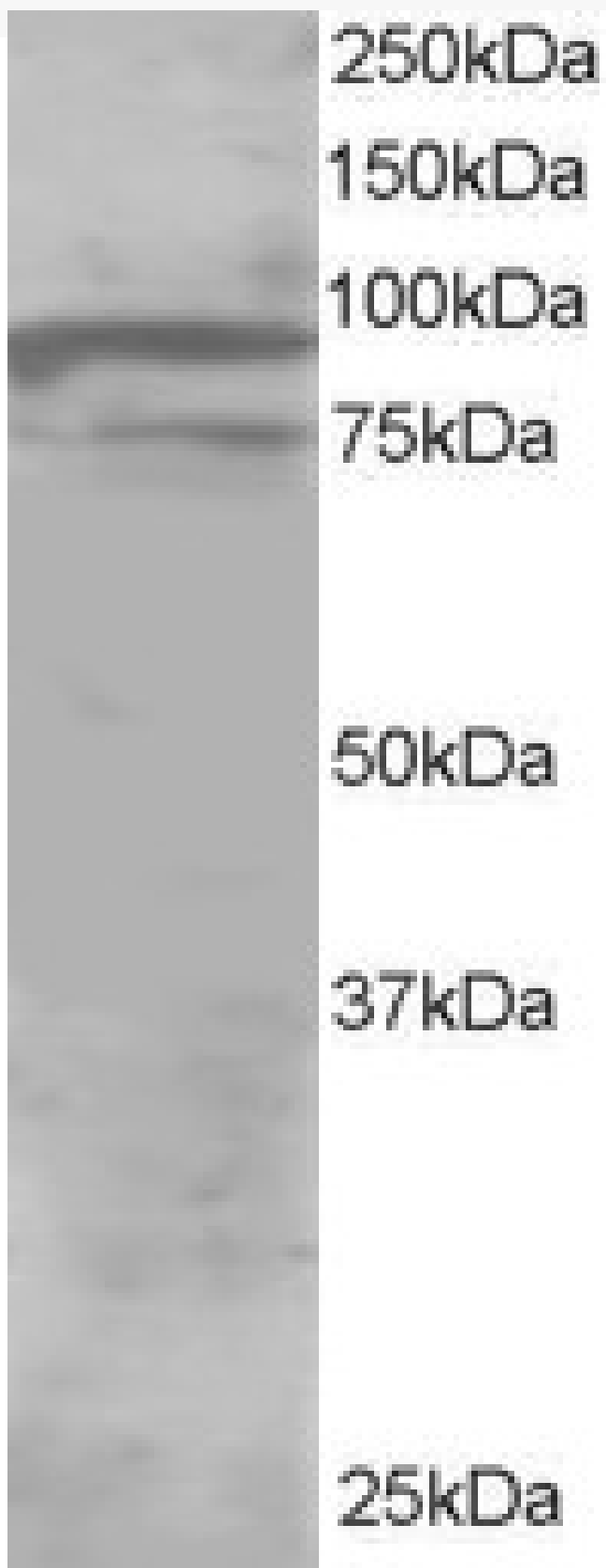


GOAT ANTI-ORP11 / OSBPL11 ANTIBODY

SKU: EB06160



SPECIFICATIONS

Formulation	Supplied at 0.5 mg/ml in Tris saline, 0.02% sodium azide, pH7.3 with 0.5% bovine serum albumin.
Unit Size	100 µg
Storage Instructions	Aliquot and store at -20°C. Minimize freezing and thawing.
Synonym / Alias Names	oxysterol-binding protein-related protein 11 OSBP-related protein 11 oxysterol binding protein-like 11 TCCCIA00292 FLJ13164 FLJ13012 OSBP12 ORP-11 ORP11 OSBPL11
Accession ID	NP_073613.2
Blocking Peptide	EBP06160
Immunogen	Peptide with sequence C-KPLWKIIPTTQPAE, from the C Terminus of the protein sequence according to NP_073613.2.
Peptide Sequence	C-KPLWKIIPTTQPAE
Purification Method	Purified from goat serum by ammonium sulphate precipitation followed by antigen affinity chromatography using the immunizing peptide.
Shipping Instructions	Refrigerated
Predicted Species	Human, Mouse, Rat, Dog, Cow
Reactive Species	Human
Human Gene ID	114885
Product Grade	https://prod-vector-labs-pimcore-assets.s3.us-east-1.amazonaws.com/assets/products/image/elite_medium.png
ELISA	
Detection Limit	Antibody detection limit dilution 1:16000.
Western Blot	Approx 85-90kDa band observed in Human Brain lysates (predicted MWs of 86kDa according to NP_073613). A minor band of unknown identity was also consistently observed at 75kDa. Recommended for use at 1-2µg/ml.
Application Type	Pep-ELISA, WB

DOCUMENTS

- [Data Sheet](#)

GALLERY IMAGES

