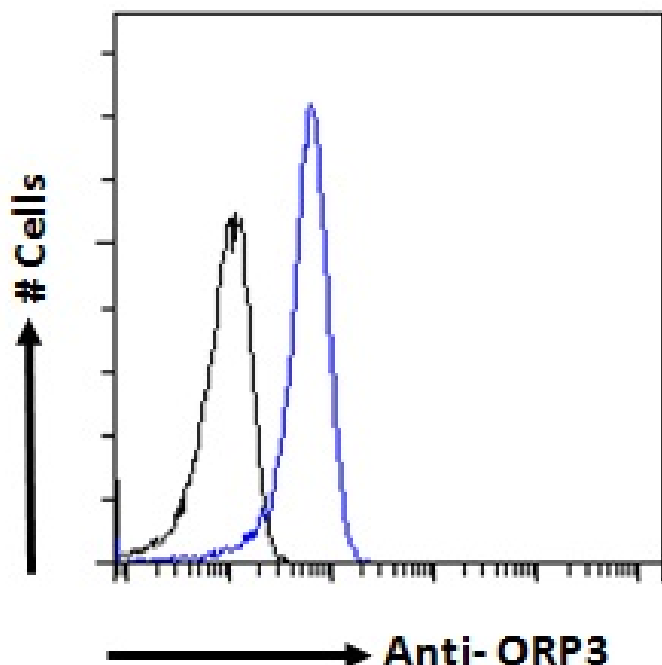


# GOAT ANTI-ORP3 ANTIBODY

SKU: EB06153



## SPECIFICATIONS

**Formulation** Supplied at 0.5 mg/ml in Tris saline, 0.02% sodium azide, pH7.3 with 0.5% bovine serum albumin.

**Unit Size** 100 µg

**Storage Instructions** Aliquot and store at -20°C. Minimize freezing and thawing.

**Synonym / Alias Names** oxysterol-binding protein-like protein  
3|OTTHUMP00000202019|OTTHUMP00000122491|OTTHUMP00000122490|DKFZp667P1518|oxysterol-binding protein-related protein 3|oxysterol-binding protein 3|OSBP-related protein 3|oxysterol binding protein-like 3|MGC21526|KIAA0704|OSBP3|ORP-3|ORP3|OSBPL3

**Usage Summary** **Immunofluorescence:** Strong expression of the protein seen in the cytoplasm of A431 cells. Recommended concentration: 10µg/ml. **Flow Cytometry:** Flow cytometric analysis of A431 cells. Recommended concentration: 10ug/ml.

**Accession ID** NP\_056365.1; NP\_663160.1; NP\_663161.1; NP\_663162.1

**Blocking Peptide** EBP06153

<b>Immunogen</b>	Peptide with sequence MSDEKNLGVSQKL-C, from the N Terminus of the protein sequence according to NP_056365.1; NP_663160.1; NP_663161.1; NP_663162.1.
<b>Product Comments</b>	This antibody is expected to recognise all reported isoforms (NP_056365.1; NP_663160.1; NP_663161.1; NP_663162.1).
<b>Peptide Sequence</b>	MSDEKNLGVSQKL-C
<b>Purification Method</b>	Purified from goat serum by ammonium sulphate precipitation followed by antigen affinity chromatography using the immunizing peptide.
<b>Shipping Instructions</b>	Refrigerated
<b>Predicted Species</b>	Human, Mouse, Rat, Dog, Pig, Cow
<b>Reactive Species</b>	Human
<b>Human Gene ID</b>	26031
<b>Mouse Gene ID</b>	71720
<b>Product Grade</b>	<a href="https://prod-vector-labs-pimcore-assets.s3.us-east-1.amazonaws.com/assets/products/image/elite_medium.png">https://prod-vector-labs-pimcore-assets.s3.us-east-1.amazonaws.com/assets/products/image/elite_medium.png</a>
<b>ELISA Detection Limit</b>	Antibody detection limit dilution 1:32000.
<b>Application Type</b>	Pep-ELISA, IF, FC

## DOCUMENTS

- [Data Sheet](#)

## GALLERY IMAGES

