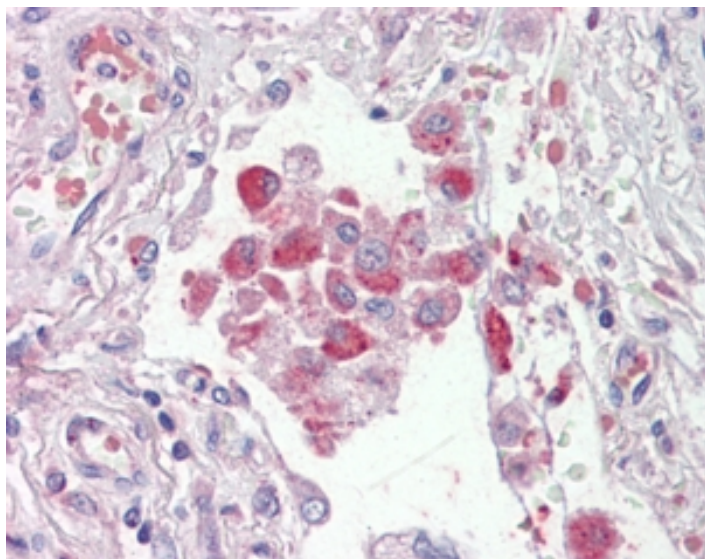


# GOAT ANTI-ORP9 / OSBPL9 ANTIBODY

**SKU:** EB06158



## SPECIFICATIONS

**Formulation** Supplied at 0.5 mg/ml in Tris saline, 0.02% sodium azide, pH7.3 with 0.5% bovine serum albumin.

**Unit Size** 100 µg

**Storage Instructions** Aliquot and store at -20°C. Minimize freezing and thawing.

**Synonym / Alias Names** OSBPL9|ORP9|FLJ12492|FLJ14629|FLJ14801|FLJ32055|FLJ34384|MGC15035|oxysterol binding protein-like 9|OSBP-related protein 9|oxysterol-binding protein-related protein 9

**Accession ID** NP\_078862.4; NP\_683702.1; NP\_683704.2; NP\_683705.1; NP\_683706.3; NP\_683707.3

**Blocking Peptide** EBP06158

**Immunogen** Peptide with sequence C-EPLLKRLGAAKH, from the C Terminus of the protein sequence according to NP\_078862.4; NP\_683702.1; NP\_683704.2; NP\_683705.1; NP\_683706.3; NP\_683707.3.

**Product Comments** This antibody is expected to recognise all six human isoforms (NP\_078862.4; NP\_683702.1; NP\_683704.2; NP\_683705.1; NP\_683706.3; NP\_683707.3). Reported variants represent identical protein (NP\_683702.1; NP\_683703.1).

**Peptide Sequence** C-EPLLKRLGAAKH

<b>Purification Method</b>	Purified from goat serum by ammonium sulphate precipitation followed by antigen affinity chromatography using the immunizing peptide.
<b>Shipping Instructions</b>	Refrigerated
<b>Predicted Species</b>	Human, Mouse, Rat, Dog, Pig, Cow
<b>Reactive Species</b>	Human
<b>Human Gene ID</b>	114883
<b>Product Grade</b>	<a href="https://prod-vector-labs-pimcore-assets.s3.us-east-1.amazonaws.com/assets/products/image/elite_medium.png">https://prod-vector-labs-pimcore-assets.s3.us-east-1.amazonaws.com/assets/products/image/elite_medium.png</a>
<b>IHC Results</b>	In paraffin embedded Human Lung shows staining of alveolar macrophages. . Recommended concentration, 2-4µg/ml.
<b>ELISA Detection Limit</b>	Antibody detection limit dilution 1:32000.
<b>Western Blot</b>	Preliminary experiments gave bands at approx 150kDa and 19kDa in lysates of Human Brain, and Testis and 55kDa in lysates of Human Placenta and Testes after 0.5 µg/ml antibody staining. Please note that currently we cannot find an explanation in the literature for the bands we observe given the different calculated sizes of the six reported isoforms (a: 62.5kDa for NP_683702.1 and NP_683703.1; b: 63.9kDa for NP_683704.1; c: 70.2kDa for NP_683705.1; d: 81.8kDa for NP_683706.1; e: 83.2 kDa for NP_078862.2; f: 84.3kDa for NP_683707.1). All detected bands were successfully blocked by incubation with the immunizing peptide (and BLAST results with the immunizing peptide sequence did not identify any other proteins to explain the additional bands). We would appreciate any feedback from people in the field - have any results been reported with other antibodies/lysates? Have any further splice variants/modified forms been reported?
<b>Application Type</b>	Pep-ELISA, IHC

## DOCUMENTS

- [Data Sheet](#)

## GALLERY IMAGES

