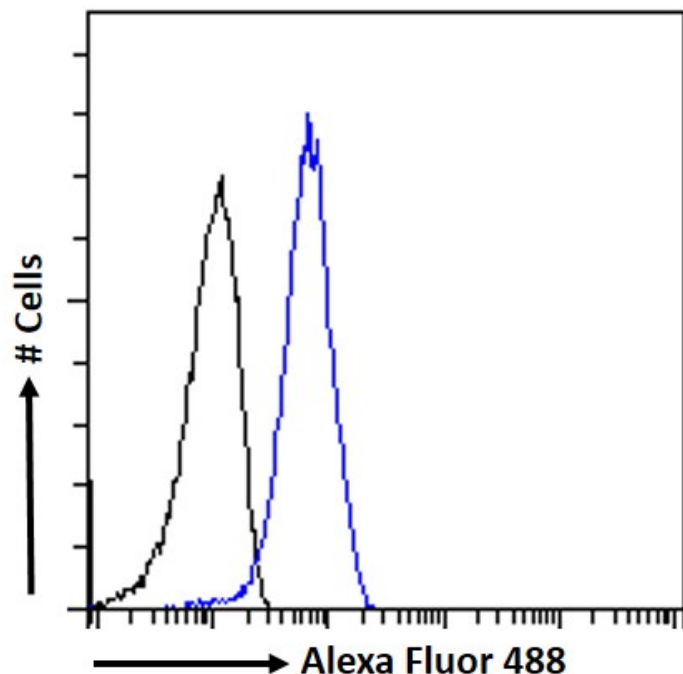


GOAT ANTI-OTUD4 ANTIBODY

SKU: EB09121



SPECIFICATIONS

Formulation Supplied at 0.5 mg/ml in Tris saline, 0.02% sodium azide, pH7.3 with 0.5% bovine serum albumin.

Unit Size 100 µg

Storage Instructions Aliquot and store at -20°C. Minimize freezing and thawing.

Synonym / Alias Names OTU domain containing 4 protein|HIV-1 induced protein
HIN-1|KIAA1046|HSHIN1|HIN1|DUBA6|DKFZp434I0721|OTU domain containing 4|OTUD4

Usage Summary **Immunofluorescence:** Strong expression of the protein seen in A413 and U2OS cells.
Recommended concentration: 10µg/ml. **Flow Cytometry:** Flow cytometric analysis of A431 cells. Recommended concentration: 10ug/ml.

Accession ID NP_955356.1; NP_001096123.1; NP_001352986.1

Blocking Peptide EBP09121

Immunogen	Peptide with sequence C-SRSRDEGYQYHRNVR , from the C Terminus (near) of the protein sequence according to NP_955356.1; NP_001096123.1; NP_001352986.1.
Product Comments	This antibody is expected to recognize reported isoforms 1 (NP_955356.1), 3 (NP_001096123.1), and 4 (NP_001352986.1).
Peptide Sequence	C-SRSRDEGYQYHRNVR
Purification Method	Purified from goat serum by ammonium sulphate precipitation followed by antigen affinity chromatography using the immunizing peptide.
Shipping Instructions	Refrigerated
Predicted Species	Human
Reactive Species	Human
Human Gene ID	54726
Mouse Gene ID	73945
Rat Gene ID	307774
Product Grade	https://prod-vector-labs-pimcore-assets.s3.us-east-1.amazonaws.com/assets/products/image/elite_medium.png
ELISA Detection Limit	Antibody detection limit dilution 1:8000.
Western Blot	Preliminary testing showed a band at approx. 110kDa in Human Skeletal Muscle lysate after 2ug/ml antibody staining. (calculated MW of 117kDa according to NP_955356.1). This band was successfully blocked by incubation with the immunizing peptide. Primary incubation 1 hour at room temperature.
Application Type	Pep-ELISA, IF, FC

DOCUMENTS

- [Data Sheet](#)

GALLERY IMAGES

