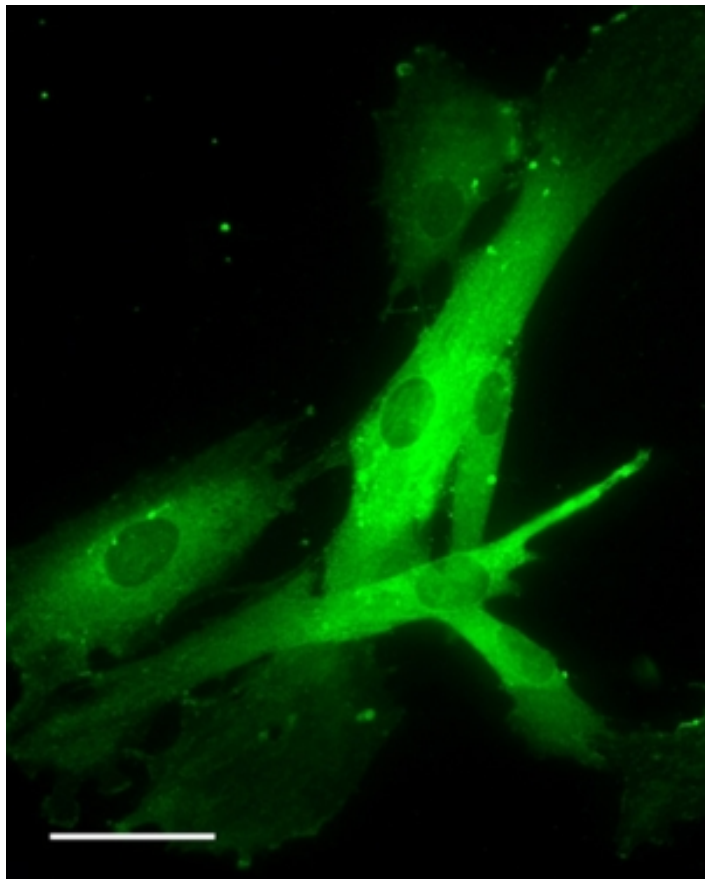


GOAT ANTI-OXTR ANTIBODY

SKU: EB08990



SPECIFICATIONS

Unit Size	100 µg
Synonym / Alias Names	OT-R oxytocin receptor OXTR
Accession ID	NP_000907.2
Blocking Peptide	EBP08990
Immunogen	Peptide with sequence C-RRLGETSASKKSN, from the C Terminus of the protein sequence according to NP_000907.2.

Peptide Sequence	C-RRLGETSASKKSN
Shipping Instructions	Refrigerated
Predicted Species	Human
Reactive Species	Human, Rat
Human Gene ID	5021
Product Grade	https://prod-vector-labs-pimcore-assets.s3.us-east-1.amazonaws.com/assets/products/image/elite_medium.png
IHC Results	In paraffin embedded Human Prostate Cancer shows staining of the stromal component of smooth muscle. Recommended concentration: 2-4µg/ml.
ELISA Detection Limit	Antibody detection limit dilution 1:16000.
Western Blot	Approx 75kDa band observed in Rat Uterus lysates, but none in Rat Skeletal Muscle lysates as expected (calculated MW of 42.9kDa according to Rat NP_037003.2. The observed molecular weight corresponds to earlier findings in literature with different antibodies (Whittington et al, Cell Tissue Res. 2004 Nov;318(2):375-82. PMID: 15459766). Recommended concentration: 1-3µg/ml. Primary incubation was 1 hour.
Application Type	Pep-ELISA, WB, IHC

DOCUMENTS

- [Data Sheet](#)

GALLERY IMAGES

